

ARMACELL SOLUTIONS

# Healthcare

Hospitals and Medical Centers are vital to the well-being of our communities. Saving lives depends on state-of-the-art medical devices but also high performing heating, cooling and ventilation systems. It's how the building keeps patients comfortable and preserves indoor air quality. Armacell offers Healthcare insulation solutions for environments where downtime is not an option.

[www.armacell.us](http://www.armacell.us)





NEW AIR PLENUM SOLUTION

# ArmaFlex<sup>®</sup> Ultra

with FlameDefense<sup>™</sup> technology — the first elastomeric insulation Classified by UL to UL 723 at 25/50. In an emergency, **it gives you time.**

[www.armacell.us](http://www.armacell.us)



 **armacell<sup>®</sup>**  
MAKING A DIFFERENCE AROUND THE WORLD



## QUICK LINKS

Click on  
the chapter  
sections to  
jump quickly  
to that page



TO  
TOC

Click on  
this icon to  
return to the  
TABLE OF  
CONTENTS

# TABLE OF CONTENTS

1	<b>About Armacell</b>
3	<b>Healthcare Solutions – Armacell in Action</b>
6	<b>Project List</b> Smart Solutions for your business
7	<b>Microban Product Protection</b>
8	<b>Stakeholder: Engineer</b> Systems Solution Packages
9	<b>Stakeholder: Contractor</b> Systems Solution Packages
10	<b>Stakeholder: Distributor</b> Systems Solution Packages
11	<b>At Your Service</b> AQIP Training / Job Site Support Proper Sizing Specification Team Technical Manager Support
13	<b>Quick Reference</b> Iron/Copper Pipe Size Chart
14	<b>Solutions Products</b>
16	<b>Healthcare Solutions Packages</b>
17	<b>Armacell Solutions Warranty</b>



# ABOUT ARMACELL

We are the inventors of flexible foams for equipment insulation and a leading provider of engineered foams. Our lightweight thermal, acoustic and mechanical solutions create sustainable value for our customers. Day in and day out, our products significantly contribute to global energy efficiency, urbanization, lightweighting, the globalization of food supplies and acoustic comfort. Our product solutions stand out in terms of functionality and ease of installation.

## // Passionate

Dedicated and professionally-minded employees with an entrepreneurial spirit are our greatest asset. They share a common set of core values: customer experience, commitment, empowerment and accountability, integrity and sustainability.

**Armacell.**

**Making a difference around the world.**

**300+**  
active patents

**24**  
production facilities  
in 16 countries on  
4 continents

**3,100**  
employees worldwide  
representing  
70 different  
nationalities



# SOLUTIONS

## ENABLING ENERGY SAVINGS

### // Innovative

We develop new technologies and focus on products that deliver superior technical performance. Now in its seventh generation, ArmaFlex® is the original flexible elastomeric foam insulation material for superior condensation control and thermal performance. Our most recent product launches include ArmaFlex Ultra, the first elastomeric insulation Classified by UL to UL 723 at 25/50.



### // Consumer-centric

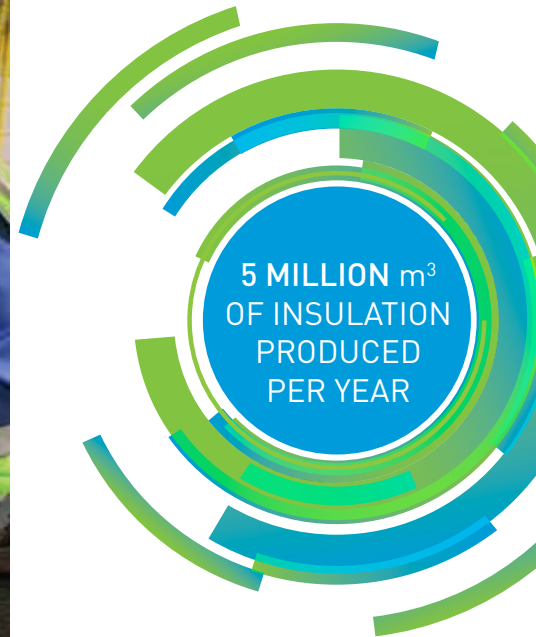
We create genuine value for our customers, value them as partners, and are committed to developing solutions tailored to their requirements. The outcome is added value for our business partners and, most significantly, energy savings and a longer working life for their critical equipment.



140 x MORE  
ENERGY  
SAVED

### // Sustainable

We dedicate our business activities to advancing and optimizing energy efficiency for equipment and to closing the loop to achieve a more sustainable use of resources. Our ArmaFlex insulation saves 140 times more energy than is required for its production and prevents the emission of several million tons of CO<sub>2</sub> per year.







# HEALTHCARE SOLUTIONS

Imagine repairing an engine on an airplane in flight. Incredibly, this situation is not unlike renovating a hospital HVAC system, if the hospital discovered that their systems had not been properly designed or implemented at the time of new construction. Although this may seem fantastic and exaggerated, you should stop and consider the critical impact of HVAC, and even plumbing systems, as they serve and support other critical life systems within the medical environment.

HVAC systems in a medical facility provide occupant comfort and safety as in any other building, but most importantly they support medical tasks and the promise of patient and staff health and safety. An HVAC system in a hospital, medical, or biomedical space should be implemented to assist in the control of infection, removal of harmful odors, reduction and dismissing of contaminants; all of which facilitate success in medical procedures, experimentation, and patient healing. Just as an airplane is built to take off and land, an HVAC system should be designed to help and heal.

Healthcare is one of the

# Top 5

energy-consuming  
building categories.



## POPULARITY AND TRENDS

New and updated codes and regulations will be primary guides in designing hospitals, medical, and biomedical facilities. This is great news considering the complexity of need found through planning and preparing to construct these spaces. Although codes and standards provide guidelines and parameters in which an agile designer can operate, it helps to trust the systems and technologies you incorporate on a deeper level.

Adoption of newer HVAC and plumbing technologies to the hospital and medical construction project environment can be slow due to confidence in reliability. While VRF as a standalone system may not be conducive to indoor air quality standards, waste-energy recovery methods used with existing equipment may reduce hospital operations costs and increase system reliability. However, strategic planning of a dedicated outdoor air system, for example, could provide the means to capture lost energy while also supporting the increased usage of VRF and chilled-beam systems.

As code and standard requirements change, or the list of needs in a medical construction project grow throughout a design period, it's comforting to know that there are basic processes and systems supporting the complex functions of each room. Air and water must be contained;



gas and heat must be distributed. Seemingly simple resources like these still power the demand for new technology, automated processes, and advanced treatment practices: all life-saving elements that enter the hospital environment. Properly securing and insulating these core elements is the first step in supporting doctors and nurses as

they save lives on a daily basis.

## HEATING/COOLING METHODS

Filtration, room pressurization, outside-air usage, and specific humidification levels are significant design parameters which directly impact the capability of a medical facility. Load envelope considered in other types of buildings is merely a starting point for these facilities. Specialty equipment such as refrigerators, magnetic resonance imaging machines, sterilization ovens, and biological sampling analysis equipment are par for the course in any major hospital. Air flow, humidity, and pressure differentials, per individual equipment manufacturer specifications, must be well thought out in design in order to sustain proper functioning of these items.

Almost every room in a hospital or medical facility is appropriate for air conditioning of some kind. Unconditioned spaces still require air recirculation but also have to accommodate the infrastructure of HVAC and plumbing passing through their walls, ceiling, or floors. Grease vents and ducting are still required in the kitchen and cafeteria because staff and visitors need to eat in a room specially designed to prevent the recirculation of smoke originating in the kitchen without interfering with the room's exhaust.





Patients' rooms are a needed haven for those infirmed and away from their homes. The rooms may typically feature a standard dual duct or VAV system, but it is important that the room be quiet, resist mold growth, and provide specific temperature management. Patient rooms designed for isolation are even more critical needing relative pressurization atmospheres to the surrounding halls and rooms. Sealing a room to maintain pressurization is difficult, but necessary. Total solution insulation systems that can insulate the envelope and protect patients and medical staff are the only option.

Hospitals and medical facilities are places meant to contain, heal, shelter, and discover. Their design for sustainability and capability pushes the most experienced designer to use their widest breadth of skills. Proper humidity levels in operating and cystoscopy rooms are not just requested, it is expected without question. Temperature control precision to +/- 2° in critical spaces such as laboratories and labor rooms is not on a wish list, it is a design set point. While the HVAC equipment addresses these demands, insulation facilitates the end goal. Designing a system with the most protective and productive insulation barrier is insurance any designer can afford.

## INNOVATIONS

Hospital and medical facility construction continues to grow year over year. Demands

created by population shifts in age and preference have refocused hospital goals towards increasing patient comfort and satisfaction through design. Fewer medical office buildings are being built on campuses while retail space and patient-family comfort is on the rise. Facilities must be built to meet requirements of today, but also accommodate the technology and capabilities of tomorrow.

While healthcare construction standardization is on the rise it is also important to ally yourself with technology providers who offer entire solutions. Providers who grow and change with their environments create opportunities to accommodate the future and address the present. 3D printing, advanced robotics, and wearable tech will continue to blossom and impact the medical industry. Meeting the resource demands of these new technologies can be a daunting task. At Armacell, innovation is at the heart of what we do.

## INSULATION FOR HOSPITALS AND MEDICAL CENTERS

Every aspect of a hospital, medical, or biomedical facility requires consistency and reliability, which means they require the proper insulation. Armacell's insulation systems are ideal for insulating chilled water piping, chillers, cooling tanks and air handlers. Insulating pipes, refrigeration

lines or cooling systems not only promotes energy efficiency, but it also prevents condensation on below-ambient temperature surfaces—a critical issue for hospital and medical facilities.

Specifying Armacell Solutions for hospitals and medical facilities is a smart move. Armacell uses a fiber-free, formaldehyde-free, low VOC formulation for its foam insulation, which makes it an excellent option for any environment, eliminating particulate that can jeopardize air quality and equipment. A closed-cell structure also prevents moisture ingress and naturally resists the growth of mold and mildew. Most importantly, the flexible nature of Armacell's insulation means it installs easily in tight spaces in floors, walls or ceilings. You can count on Armacell insulation retaining its thermal integrity over time, lasting well into your future. ■







# HEALTHCARE FACILITIES RELY ON OUR PROVEN SOLUTIONS

## PROJECTS WON

- **Boston Children's Clinical Building** – Boston, MA
- **Children's Healthcare of Atlanta North Druid Hills Campus** – Atlanta, GA
- **Duke University Hospital** – Durham, NC
- **Franciscan Alliance Hospital** – Michigan City, IN
- **Grand Island Community Hospital BP 4** – Grand Island, NE
- **Hospital Pacifica Salud** – Ciudad de Panamá, Panamá
- **INOVA Loudoun Hospital Bed Tower** – Leesburg, VA
- **Loma Linda Hospital Children's & Adult Medical Wings (aka Dennis and Carol Troesh Medical Campus)** – Loma Linda, CA
- **Methodist Midlothian Medical Center** – Midlothian, TX
- **Milford Memorial Hospital - Bay Health** – Milford, DE
- **New Medical Pavilion - Vassar Brothers Medical Center** – Poughkeepsie, NY
- **NextGen Precision Health Institute** – Columbia, MO
- **Ozarks Medical Center** – West Plains, MO
- **Penrose-St. Francis New Campus** – Colorado Springs, CO
- **Piedmont Hospital - Marcus Heart and Vascular Center** – Atlanta, GA
- **Prince George's County Regional Hospital** – Largo, MD
- **Riverside University Health System Outpatient Surgery Center** – Moreno Valley, CA
- **Seattle Children's Research Institute** – Seattle, WA
- **St. Luke's Hospital, Anderson Campus Tower Two Wing** – Easton, PA
- **Trinity Health System Replacement Facility** – Minot, ND
- **UNC Hospitals New Perioperative Tower** – Chapel Hill, NC
- **UNC Rex Healthcare Cancer Center** – Chapel Hill, NC

## SMART SOLUTIONS FOR YOUR BUSINESS

### Enjoy the benefits of our excellent customer service

All over the world, our customers rely on sales representatives, technical consultants and applications engineers

Your project demands more. You deserve the best solution.

Get the original, closed cell thermal and acoustic solutions from Armacell.



>> Antimicrobial technologies minimize the presence of bacteria mold and fungi to offer a greater level of product protection. >>



## THE EXCLUSIVE INSULATION MATERIAL WITH MICROBAN ANTIMICROBIAL PRODUCT PROTECTION

### // How does it work?

Microban antimicrobial chemistries are continuously working within the molecular structure of AP ArmaFlex products, creating an inhospitable environment for microbes to grow and multiply. Product protection begins to work as soon as a microorganism comes into contact with a product surface. Microban antimicrobial protection penetrates the cell wall of the microorganism, disrupting the cell and making the microorganism unable to grow and reproduce. The antimicrobial protection then works continuously to maintain a consistently lower bio-burden than would be expected on a product without Microban protection.

Microban antimicrobial technologies have undergone extensive independent laboratory testing and have a long history of safe use. The biocidal active components of Microban antimicrobial additives are notified with the Biocidal Products Regulation and approved for use by the Environmental Protection Agency of the United States.

### // Microban in practice: simulated petri dish images.

Under the right conditions, microbes on an untreated surface can double every 20 minutes. The image on the left shows an unprotected surface (figure 1) as compared to a surface protected with Microban antimicrobial additive 24 hours after exposure (figure 2).

AP ArmaFlex is infused with Microban to inhibit the growth of bacteria such as as E-coli and Staphylococcus, as well as stain and odor-causing mold and mildew from growing on any surface of the insulation. Unlike disinfectants which provide a limited residual activity once the treated surface dries, the integrated antimicrobial technology works to continuously reduce the growth of microbes throughout the entire lifecycle of a product. Built into the insulation material, it will not wash off or wear away, making it the ideal option for specification into cleanliness-critical environments such as healthcare.



Figure 1:  
Unprotected surface



Figure 2:  
Surface protected with Microban



# STAKEHOLDER: MECHANICAL ENGINEERS

## Specifiers Hold the Keys to Project Success

At Armacell, we know that the specifier is the key to a successful mechanical insulation system. We believe that providing the mechanical engineer or system designer with the knowledge and tools to make the right selection in the design phase is fundamental to the durability and energy efficiency of any HVAC or plumbing project. Mechanical system designers can have a significant impact on occupant health and must take steps during the design and

construction phases to ensure efficient system performance, condensation control, long-lasting thermal protection, acoustic benefits and healthier indoor air quality. Armacell's Specification team is here to help Mechanical Engineers and Specifiers with any insulation project. Their full-time job is to support you in any way that helps simplify the HVAC-R and acoustic specification process.

### Engineer USP / Value Proposition

- Tailored Solutions for Code Compliance, Performance and Budget
- Trusted Protection for System and Design
- Simple, Safe and Efficient System Integrity
- Drag & Drop Specification Package by Division
- Backed by an Industry Leader with over 60 years' industry experience and a 15-year warranty\*

**Armacell has a comprehensive Solutions Portfolio designed to meet the needs of your application challenges.**

**Choose the Healthcare Solutions Package that best meets the performance level and budget of your equipment system.**

Application / System Type		HC1 Solution Package	HC2 Solution Package	HC3 Solution Package
	Core Performance Requirements	Superior Performance	High Performance	Standard Performance
Specification	<a href="#">Master Specification Link</a>	<a href="#">HC1 Project Specification Link</a>	<a href="#">HC2 Project Specification Link</a>	<a href="#">HC3 Project Specification Link</a>
Air Plenum Piping and Duct Insulation	<ul style="list-style-type: none"><li>• Class A - Flame-spread 0-25, smoke developed 50</li><li>• UL Classified to UL 723 (Listed and Labeled)</li><li>• Energy Efficient &amp; Low Total Install Costs</li><li>• Low Dust or Fiber Emitting Properties</li><li>• Mold and Mildew Resistance</li><li>• Tough &amp; Durable</li><li>• Compliant to all State and City Building Codes</li></ul>	<ul style="list-style-type: none"><li>• ArmaFlex Ultra Pipe Insulation</li><li>• ArmaFlex Ultra Lap Seal Insulation</li><li>• ArmaFlex Ultra Sheet/Roll Insulation</li><li>• ArmaFlex Ultra Fittings</li></ul>	<ul style="list-style-type: none"><li>• ArmaFlex Ultra Pipe Insulation</li><li>• ArmaFlex Ultra Lap Seal Insulation</li><li>• ArmaFlex Ultra Sheet/Roll Insulation</li><li>• ArmaFlex Ultra Fittings</li></ul>	<ul style="list-style-type: none"><li>• ArmaFlex Ultra Pipe Insulation</li><li>• ArmaFlex Ultra Lap Seal Insulation</li><li>• ArmaFlex Ultra Sheet/Roll Insulation</li><li>• ArmaFlex Ultra Fittings</li></ul>
HVAC/R & Mechanical Piping	<ul style="list-style-type: none"><li>• Class A - Flame-spread 0-25, smoke developed 0-450</li><li>• Energy Efficient &amp; Low Total Install Costs</li><li>• Low Dust or Fiber Emitting Properties</li><li>• Mold and Mildew Resistance</li><li>• Tough &amp; Durable</li><li>• Compliant to all State and City Building Codes</li></ul>	<ul style="list-style-type: none"><li>• ArmaFlex Ultra Pipe Insulation</li><li>• ArmaFlex Ultra Lap Seal Insulation</li><li>• ArmaFlex Ultra Sheet/Roll Insulation</li><li>• ArmaFlex Ultra Fittings</li><li>• ArmaFlex Shield Pipe Insulation</li></ul>	<ul style="list-style-type: none"><li>• AP ArmaFlex Pipe Insulation</li><li>• AP ArmaFlex Lap Seal Insulation</li><li>• AP ArmaFlex Sheet/Roll Insulation</li><li>• AP ArmaFlex Fittings</li></ul>	<ul style="list-style-type: none"><li>• ProFlex Pipe Insulation</li><li>• ProFlex Lap Seal Insulation</li><li>• ProFlex Sheet/Roll Insulation</li><li>• ProFlex Fittings</li></ul>
Central Utility Plant Operations Chilled Water and Hydronic Heating	<ul style="list-style-type: none"><li>• Class A - Flame-spread 0-25, smoke developed 0-450</li><li>• Energy Efficient &amp; Low Total Install Costs</li><li>• Low Dust or Fiber Emitting Properties</li><li>• Mold and Mildew Resistance</li><li>• Tough &amp; Durable</li><li>• Compliant to all State and City Building Codes</li></ul>	<ul style="list-style-type: none"><li>• ArmaFlex Ultra Lap Seal Insulation</li><li>• ArmaFlex Ultra Sheet/Roll Insulation</li><li>• ArmaFlex Ultra Fittings</li></ul>	<ul style="list-style-type: none"><li>• AP ArmaFlex Pipe Insulation</li><li>• AP ArmaFlex Lap Seal Insulation</li><li>• AP ArmaFlex Sheet/Roll Insulation</li><li>• AP ArmaFlex Fittings</li></ul>	<ul style="list-style-type: none"><li>• ProFlex Pipe Insulation</li><li>• ProFlex Lap Seal Insulation</li><li>• ProFlex Sheet/Roll Insulation</li><li>• ProFlex Fittings</li></ul>
Plumbing	<ul style="list-style-type: none"><li>• Class A - Flame-spread 0-25, smoke developed 0-450</li><li>• Energy Efficient &amp; Low Total Install Costs</li><li>• Low Dust or Fiber Emitting Properties</li><li>• Mold and Mildew Resistance</li><li>• Tough &amp; Durable</li><li>• Compliant to all State and City Building Codes</li></ul>	<ul style="list-style-type: none"><li>• Tundra Insulation (Canada)</li><li>• IMCOA SS Insulation or Tubolit SS Insulation</li><li>• PE Fittings</li></ul>	<ul style="list-style-type: none"><li>• Tundra Insulation (Canada)</li><li>• IMCOA SS Insulation or Tubolit SS Insulation</li><li>• PE Fittings</li></ul>	<ul style="list-style-type: none"><li>• Tundra Insulation (Canada)</li><li>• IMCOA SS Insulation or Tubolit SS Insulation</li><li>• PE Fittings</li></ul>
Accessories & Supports	<ul style="list-style-type: none"><li>• Class A - Flame-spread 0-25, smoke developed 0-450</li><li>• Energy Efficient &amp; Low Total Install Costs</li><li>• Low Dust or Fiber Emitting Properties</li><li>• Mold and Mildew Resistance</li><li>• Tough &amp; Durable</li><li>• Compliant to all State and City Building Codes</li></ul>	<ul style="list-style-type: none"><li>• Insuguard Multi Saddles &amp; Shields</li><li>• ArmaFix Ecolight Pipe Supports</li><li>• Armacell Insulation Tape</li><li>• Armacell 520 Adhesives</li></ul>	<ul style="list-style-type: none"><li>• Insuguard Multi Saddles &amp; Shields</li><li>• ArmaFix Ecolight Pipe Supports</li><li>• Armacell Insulation Tape</li><li>• Armacell 520 Adhesives</li></ul>	<ul style="list-style-type: none"><li>• Insuguard Multi Saddles &amp; Shields</li><li>• ArmaFix Ecolight Pipe Supports</li><li>• Armacell Insulation Tape</li><li>• Armacell 520 Adhesives</li></ul>
Warranty		<ul style="list-style-type: none"><li>• 15-Year Limited Warranty</li></ul>	<ul style="list-style-type: none"><li>• 10-Year Limited Warranty</li></ul>	<ul style="list-style-type: none"><li>• 5-Year Limited Warranty</li></ul>
Support Documents		<a href="#">HC1 Solution Package - Document Link</a>	<a href="#">HC2 Solution Package - Document Link</a>	<a href="#">HC3 Solution Package - Document Link</a>





# STAKEHOLDER: CONTRACTOR

## Installers Make it Happen

Armacell understands the importance of the insulation contractor in the selection and proper installation of mechanical insulation products for equipment, pipes and ducts. Insulation contractors routinely make critical decisions that can – for better or for worse – affect the outcome of the project. These decisions must take into account a variety of factors, including building codes, specific application challenges, insulation capability, as well as time and budget constraints.

We strive to help insulation contractors rise to the challenge of their job in a couple of ways. First, our Technical Managers and Installation Specialists, all of whom are experts in the selection and application of all our foam materials, are fully prepared to respond to any technical questions that may arise. Second, we work closely with an extensive network of distributors so that they can provide a quick response on pricing and availability of our products.

### Contractor USP / Value Proposition

- Tailored Solutions for Code Compliance, Performance and Budget
- System and Performance Integrity - Virtually maintenance free
- One system to Support, Insulate and Protect
- Backed by an Industry Leader and a 15-year warranty\*
- AQIP Factory Training, Field Support and On-Call Technical Support
- National Distribution Network

Armacell has a comprehensive Solutions Portfolio designed to meet the needs of your application challenges.

Choose the Healthcare Solutions Package that best meets the performance level and budget of your equipment system.

Application / System Type	HC1 Solution Package	HC2 Solution Package	HC3 Solution Package
	Superior Performance	High Performance	Standard Performance
Specification	<a href="#">HC1 Project Specification Link</a>	<a href="#">HC2 Project Specification Link</a>	<a href="#">HC3 Project Specification Link</a>
Air Plenum Piping and Duct Insulation	<ul style="list-style-type: none"> <li>• ArmaFlex Ultra Pipe Insulation</li> <li>• ArmaFlex Ultra Lap Seal Insulation</li> <li>• ArmaFlex Ultra Sheet/Roll Insulation</li> <li>• ArmaFlex Ultra Fittings</li> </ul>	<ul style="list-style-type: none"> <li>• ArmaFlex Ultra Pipe Insulation</li> <li>• ArmaFlex Ultra Lap Seal Insulation</li> <li>• ArmaFlex Ultra Sheet/Roll Insulation</li> <li>• ArmaFlex Ultra Fittings</li> </ul>	<ul style="list-style-type: none"> <li>• ArmaFlex Ultra Pipe Insulation</li> <li>• ArmaFlex Ultra Lap Seal Insulation</li> <li>• ArmaFlex Ultra Sheet/Roll Insulation</li> <li>• ArmaFlex Ultra Fittings</li> </ul>
HVAC/R & Mechanical Piping	<ul style="list-style-type: none"> <li>• Class A - Flame-spread 0-25, smoke developed 0-450</li> <li>• Energy Efficient &amp; Low Total Install Costs</li> <li>• Low Dust or Fiber Emitting Properties</li> <li>• Mold and Mildew Resistance</li> <li>• Tough &amp; Durable</li> <li>• Compliant to all State and City Building Codes</li> </ul>	<ul style="list-style-type: none"> <li>• AP ArmaFlex Pipe Insulation</li> <li>• AP ArmaFlex Lap Seal Insulation</li> <li>• AP ArmaFlex Sheet/Roll Insulation</li> <li>• AP ArmaFlex Fittings</li> </ul>	<ul style="list-style-type: none"> <li>• ProFlex Pipe Insulation</li> <li>• ProFlex Lap Seal Insulation</li> <li>• ProFlex Sheet/Roll Insulation</li> <li>• ProFlex Fittings</li> </ul>
Central Utility Plant Operations Chilled Water and Hydronic Heating	<ul style="list-style-type: none"> <li>• Class A - Flame-spread 0-25, smoke developed 0-450</li> <li>• Energy Efficient &amp; Low Total Install Costs</li> <li>• Low Dust or Fiber Emitting Properties</li> <li>• Mold and Mildew Resistance</li> <li>• Tough &amp; Durable</li> <li>• Compliant to all State and City Building Codes</li> </ul>	<ul style="list-style-type: none"> <li>• AP ArmaFlex Pipe Insulation</li> <li>• AP ArmaFlex Lap Seal Insulation</li> <li>• AP ArmaFlex Sheet/Roll Insulation</li> <li>• AP ArmaFlex Fittings</li> </ul>	<ul style="list-style-type: none"> <li>• ProFlex Pipe Insulation</li> <li>• ProFlex Lap Seal Insulation</li> <li>• ProFlex Sheet/Roll Insulation</li> <li>• ProFlex Fittings</li> </ul>
Plumbing	<ul style="list-style-type: none"> <li>• Class A - Flame-spread 0-25, smoke developed 0-450</li> <li>• Energy Efficient &amp; Low Total Install Costs</li> <li>• Low Dust or Fiber Emitting Properties</li> <li>• Mold and Mildew Resistance</li> <li>• Tough &amp; Durable</li> <li>• Compliant to all State and City Building Codes</li> </ul>	<ul style="list-style-type: none"> <li>• Tundra Insulation (Canada)</li> <li>• IMCOA SS Insulation or Tubolit SS Insulation</li> <li>• PE Fittings</li> </ul>	<ul style="list-style-type: none"> <li>• Tundra Insulation (Canada)</li> <li>• IMCOA SS Insulation or Tubolit SS Insulation</li> <li>• PE Fittings</li> </ul>
Accessories & Supports	<ul style="list-style-type: none"> <li>• Class A - Flame-spread 0-25, smoke developed 0-450</li> <li>• Energy Efficient &amp; Low Total Install Costs</li> <li>• Low Dust or Fiber Emitting Properties</li> <li>• Mold and Mildew Resistance</li> <li>• Tough &amp; Durable</li> <li>• Compliant to all State and City Building Codes</li> </ul>	<ul style="list-style-type: none"> <li>• Insuguard Multi Saddles &amp; Shields</li> <li>• ArmaFix Ecolight Pipe Supports</li> <li>• Armacell Insulation Tape</li> <li>• Armacell 520 Adhesives</li> </ul>	<ul style="list-style-type: none"> <li>• Insuguard Multi Saddles &amp; Shields</li> <li>• ArmaFix Ecolight Pipe Supports</li> <li>• Armacell Insulation Tape</li> <li>• Armacell 520 Adhesives</li> </ul>
Warranty	• 15-Year Limited Warranty	• 10-Year Limited Warranty	• 5-Year Limited Warranty
Support Documents	<a href="#">HC1 Solution Package - Document Link</a>	<a href="#">HC2 Solution Package - Document Link</a>	<a href="#">HC3 Solution Package - Document Link</a>



# STAKEHOLDER: DISTRIBUTORS

Committed to your Success

Distributors and Wholesalers want and need suppliers who are willing to work with them as partners. As a partner, a supplier should be able to provide both the goods and services that enhance the distributorship's growth and helps it adapt as the business climate changes. It's this partnership that inspires confidence and trust in the supplier.

That's what Armacell brings to each one of its distributor/wholesaler relationships. It is a business philosophy that dates back

to 1954 with the introduction of ArmaFlex. Today with six manufacturing operations in the North America, and 24 manufacturing facilities worldwide, Armacell has the capacity and logistics network to reliably meet the inventory demands of distributors. Our product knowledge, innovation and research continue to make us the global leader in elastomeric foam production. We are experts in the industry and are poised to support our distributors in their success.

## Distributor USP / Value Proposition

- Tailored Solutions for Code Compliance, Performance and Budget
- Single Sourced Solution
- Job-site Direct Shipping
- Broadest Insulation and Accessory Portfolio
- AQIP Factory Training, Field Support and On-Call Technical Support provided
- Backed by a Leader with over 60 years' industry experience and a 15-year warranty\*
- Dedicated Support Teams to support your staff and customers

Armacell has a comprehensive Solutions Portfolio designed to meet the needs of your application challenges.

Choose the Healthcare Solutions Package that best meets the performance level and budget of your equipment system.

Application / System Type	HC1 Solution Package	HC2 Solution Package	HC3 Solution Package
	Superior Performance	High Performance	Standard Performance
Specification	<a href="#">HC1 Project Specification Link</a>	<a href="#">HC2 Project Specification Link</a>	<a href="#">HC3 Project Specification Link</a>
Air Plenum Piping and Duct Insulation	<ul style="list-style-type: none"> <li>• ArmaFlex Ultra Pipe Insulation</li> <li>• ArmaFlex Ultra Lap Seal Insulation</li> <li>• ArmaFlex Ultra Sheet/Roll Insulation</li> <li>• ArmaFlex Ultra Fittings</li> </ul>	<ul style="list-style-type: none"> <li>• ArmaFlex Ultra Pipe Insulation</li> <li>• ArmaFlex Ultra Lap Seal Insulation</li> <li>• ArmaFlex Ultra Sheet/Roll Insulation</li> <li>• ArmaFlex Ultra Fittings</li> </ul>	<ul style="list-style-type: none"> <li>• ArmaFlex Ultra Pipe Insulation</li> <li>• ArmaFlex Ultra Lap Seal Insulation</li> <li>• ArmaFlex Ultra Sheet/Roll Insulation</li> <li>• ArmaFlex Ultra Fittings</li> </ul>
HVAC/R & Mechanical Piping	<ul style="list-style-type: none"> <li>• Class A - Flame-spread 0-25, smoke developed 0-450</li> <li>• Energy Efficient &amp; Low Total Install Costs</li> <li>• Low Dust or Fiber Emitting Properties</li> <li>• Mold and Mildew Resistance</li> <li>• Tough &amp; Durable</li> <li>• Compliant to all State and City Building Codes</li> </ul>	<ul style="list-style-type: none"> <li>• AP ArmaFlex Pipe Insulation</li> <li>• AP ArmaFlex Lap Seal Insulation</li> <li>• AP ArmaFlex Sheet/Roll Insulation</li> <li>• AP ArmaFlex Fittings</li> </ul>	<ul style="list-style-type: none"> <li>• ProFlex Pipe Insulation</li> <li>• ProFlex Lap Seal Insulation</li> <li>• ProFlex Sheet/Roll Insulation</li> <li>• ProFlex Fittings</li> </ul>
Central Utility Plant Operations Chilled Water and Hydronic Heating	<ul style="list-style-type: none"> <li>• Class A - Flame-spread 0-25, smoke developed 0-450</li> <li>• Energy Efficient &amp; Low Total Install Costs</li> <li>• Low Dust or Fiber Emitting Properties</li> <li>• Mold and Mildew Resistance</li> <li>• Tough &amp; Durable</li> <li>• Compliant to all State and City Building Codes</li> </ul>	<ul style="list-style-type: none"> <li>• AP ArmaFlex Pipe Insulation</li> <li>• AP ArmaFlex Lap Seal Insulation</li> <li>• AP ArmaFlex Sheet/Roll Insulation</li> <li>• AP ArmaFlex Fittings</li> </ul>	<ul style="list-style-type: none"> <li>• ProFlex Pipe Insulation</li> <li>• ProFlex Lap Seal Insulation</li> <li>• ProFlex Sheet/Roll Insulation</li> <li>• ProFlex Fittings</li> </ul>
Plumbing	<ul style="list-style-type: none"> <li>• Class A - Flame-spread 0-25, smoke developed 0-450</li> <li>• Energy Efficient &amp; Low Total Install Costs</li> <li>• Low Dust or Fiber Emitting Properties</li> <li>• Mold and Mildew Resistance</li> <li>• Tough &amp; Durable</li> <li>• Compliant to all State and City Building Codes</li> </ul>	<ul style="list-style-type: none"> <li>• Tundra Insulation (Canada)</li> <li>• IMCOA SS Insulation or Tubolit SS Insulation</li> <li>• PE Fittings</li> </ul>	<ul style="list-style-type: none"> <li>• Tundra Insulation (Canada)</li> <li>• IMCOA SS Insulation or Tubolit SS Insulation</li> <li>• PE Fittings</li> </ul>
Accessories & Supports	<ul style="list-style-type: none"> <li>• Class A - Flame-spread 0-25, smoke developed 0-450</li> <li>• Energy Efficient &amp; Low Total Install Costs</li> <li>• Low Dust or Fiber Emitting Properties</li> <li>• Mold and Mildew Resistance</li> <li>• Tough &amp; Durable</li> <li>• Compliant to all State and City Building Codes</li> </ul>	<ul style="list-style-type: none"> <li>• Insuguard Multi Saddles &amp; Shields</li> <li>• ArmaFix Ecolight Pipe Supports</li> <li>• Armacell Insulation Tape</li> <li>• Armacell 520 Adhesives</li> </ul>	<ul style="list-style-type: none"> <li>• Insuguard Multi Saddles &amp; Shields</li> <li>• ArmaFix Ecolight Pipe Supports</li> <li>• Armacell Insulation Tape</li> <li>• Armacell 520 Adhesives</li> </ul>
Warranty	• 15-Year Limited Warranty	• 10-Year Limited Warranty	• 5-Year Limited Warranty
Support Documents	<a href="#">HC1 Solution Package - Document Link</a>	<a href="#">HC2 Solution Package - Document Link</a>	<a href="#">HC3 Solution Package - Document Link</a>

## AT YOUR SERVICE

At Armacell, we are committed to creating an exceptional customer experience. We understand today's Healthcare trends and challenges and share know-how based on our extensive experience to help you implement your project successfully. We do all we can to give you peace of mind while managing your projects.



### ARMAFLEX APPLICATION TRAININGS

To ensure that our insulation materials are installed properly, Armacell has trained thousands of installers around the world. Special training centers have been set up at many locations and we also provide valuable support on site. Several thousand insulators attend courses on installing Armacell products every year and are awarded the Armacell Qualified Installer Program (AQIP) application certificate.

#### Valuable tips and tricks

Learn to install ArmaFlex more reliably and faster than you do today.

### ARMWIN – PROFESSIONAL INSULATION CALCULATIONS

With our powerful ArmWin software, you can carry out all common technical calculations in HVAC applications. You can easily determine the minimum insulation thickness required for condensation control, as well as surface temperature, heat flow, temperature changes in flowing and stationary media, freezing times for water pipes and the most economical insulation thickness.

#### ArmWin

All-in-one technical  
insulation calculations tool.





# AT YOUR SERVICE



## SPECIFICATION SUPPORT

It is challenging to keep up with changing building codes and evolving materials technology. Armacell employs a team of full-time specification experts dedicated to providing Engineers and Specifiers solutions for complex mechanical systems. They can review and update your specs, advise on new innovations and recommend the best insulation solution for your project.

### Lunch & Learn

Providing PDH credits for onsite seminars

## EXPERT TECHNICAL SUPPORT

Have a question? We have the most experienced Technical support in the industry and they are ready to take your call. Speak to experts with decades of experience who can answer your technical concerns or offer product advice.

### On call

Give our Technical Manager a call if you have questions.



You'll find a wealth of information on our website [www.armacell.us](http://www.armacell.us). Access our KNOWLEDGE CENTER for document downloads, installation videos, FAQ's and more. Visit the RESOURCES section for content tailored especially to Mechanical Engineers, Insulation Contractors, Distributor / Wholesalers and much more.

# QUICK REFERENCE

Quick links to the Technical Data Sheet for the products offered in this e-book. If you need other products or information visit [www.armacell.us](http://www.armacell.us).



Click on  
the product  
names to jump  
quickly to the  
data sheet.

- ArmaFlex Ultra
- AP ArmaFlex Tubes
- AP ArmaFlex Black LapSeal
- AP ArmaFlex Sheet/Roll
- AP ArmaFlex Duct
- ArmaFlex Shield
- ArmaFlex Fittings
- ArmaFlex Tape
- ArmaFlex 520 Adhesive
- ProFlex Tube Sheet and Roll
- Tubolit Tube Sheet and Roll
- Tundra Tube Sheet and Roll
- ImcoaTube Sheet and Roll
- Insuguard Multi Pipe Hangers
- ArmaFix EcoLight Pipe Supports



## IRON / COPPER PIPE SIZE CHART

Choose sheet and roll insulation for pipes larger than 10", mechanical systems, chillers, larger surfaces, tanks and fittings. Available in regular and self-adhering for both interior and exterior applications.

Nominal Insulation ID	Fits Pipe Size				Actual Insulation ID <sup>1,2</sup>			
	Copper Nom Size & ID (Types K,L,M)	Copper Nom Size & OD (ACR)	Iron / PVC IPS	DN <sup>3</sup>	Min ID (in)	Max ID (in)	Min ID (mm)	Max ID (mm)
1/4"	-	1/4"	-		0.293	0.355	7.4	9.0
3/8"	1/4"	3/8"	1/8"	6	0.420	0.500	10.7	12.7
1/2"	3/8"	1/2"	1/4"	8	0.560	0.640	14.2	16.3
5/8"	1/2"	5/8"	3/8"	10	0.710	0.790	18.0	20.1
3/4"	5/8"	3/4"	-	-	0.810	0.910	20.6	23.1
7/8"	3/4"	7/8"	1/2"	15	0.940	1.050	23.9	26.7
1-1/8"	1"	1 1/8"	3/4"	20	1.200	1.310	30.5	33.3
1-3/8"	1-1/4"	1 3/8"	1"	25	1.450	1.570	36.8	39.9
1-5/8"	1-1/2"	1 5/8"	1-1/4"	32	1.710	1.830	43.4	46.5
1-1/2"	-	-	1-1/2"	40	1.970	2.090	50.0	53.1
2-1/8"	2"	2 1/8"	-	-	2.220	2.340	56.4	59.4
2"	-	-	2"	50	2.580	2.780	65.5	70.6
2-5/8"	2-1/2"	2 5/8"	-	-	2.720	2.880	69.1	73.2
2-1/2"	-	-	2-1/2"	65	3.080	3.280	78.2	83.3
3-1/8"	3"	3 1/8"	-	-	3.230	3.390	82.0	86.1
3"	-	-	3"	80	3.700	3.900	94.0	99.1
3-5/8"	3-1/2"	3 5/8"	-	-	3.740	3.880	95.0	98.6
4-1/8"	4"	4 1/8"	3-1/2"	90	4.250	4.420	108.0	112.3
4"	-	-	4"	100	4.750	4.950	120.7	125.7
5"	-	-	5"	125	5.810	6.010	147.6	152.7
6"	-	-	6"	150	6.880	7.080	174.8	179.8
8"	-	-	8"	200	8.880	9.080	225.6	230.6
10"	-	-	10"	250	11.005	11.205	279.5	284.6

1. ID tolerances are typical values and may differ depending on the product and wall thickness.

2. Insulation ID is sized larger than the pipe OD to fit over copper pipe couplings. When properly installed, a gap between the insulation and pipe will not adversely effect the insulation performance.

3. DN, diametre nominel, is equivalent to NPS sizes in metric dimensions.

NOTE: See installation guide for proper installation instructions.

WEB: [www.armacell.us](http://www.armacell.us) > Knowledge Center > Document Downloads > Mechanical Insulation > Installation Manuals

# SOLUTIONS PRODUCTS

## Tubes



### AP ArmaFlex® White and Black Tubes

Original flexible, closed cell elastomeric tubes in black and white



### ArmaFlex® Shield

Continuous coil pipe insulation with durable, protective coating



### Imcoa®, Tubolit®, Tundra®

Economical polyethylene insulation for plumbing lines, in semi-slit and self-seal closure



### AP ArmaFlex® Black LapSeal

Self-sealing tube insulation with reinforced lap seal



### ArmaFlex® Ultra & LapSeal

The first elastomeric pipe insulation Classified by UL to UL 723 at 25/50



### ProFlex® Tubes & LapSeal

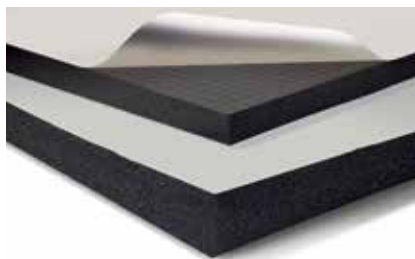
Economical flexible foam insulation for HVAC/R applications

## Sheet and Roll



### AP ArmaFlex® & AP ArmaFlex® FS

Original fiber-free insulation for thermal applications



### AP ArmaFlex® SA & AP ArmaFlex® FS SA

Fiber-free insulation for thermal applications in self-adhering format



### ArmaFlex® Ultra

The first elastomeric insulation Classified by UL to UL 723 at 25/50



### ProFlex®

Economical flexible foam insulation for HVAC/R applications

## Duct Liner and Wrap



### ArmaFlex® Ultra Duct Liner

The first elastomeric duct liner Classified by UL to UL 723 at 25/50



### ArmaFlex® Ultra Duct Wrap

The first elastomeric duct wrap Classified by UL to UL 723 at 25/50

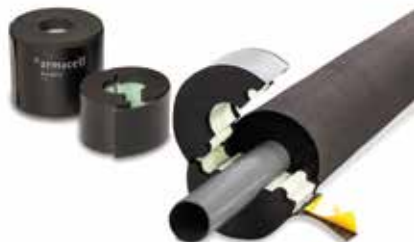


# SOLUTIONS PRODUCTS

15/SOLUTIONS PRODUCTS



## Accessories



### Armafix® EcoLight Pipe Support

Insulated pipe support with self-adhesive closure



### AP ArmaFlex® Insulation Tape

Pressure sensitive foam tape for insulating pipes and fittings



### Insuguard® Multi

Tool-free pipe hanger system with adapters for all common mountings



### ArmaFlex® Pre-fabricated Fittings

Made to order fittings for T's, Elbows, P Traps and more



### ArmaFlex® Black LapSeal Tape

Low profile tape for AP ArmaFlex Black LapSeal end seams



### PE Fittings

Pre-fabricated T's and Elbows made of polyethylene

## Adhesives and Coatings



### 520 Adhesive & 520 Black

Recommended adhesive specially formulated for ArmaFlex insulation



### 520 BLV & Low VOC Spray Adhesive

Low VOC adhesive alternatives



### WB Finish

Latex-based, indoor/outdoor, UV-resistant coating for ArmaFlex insulation

#### OUTDOOR USE:

Painting with WB Finish or other protective jacketing is required to prevent damage to the insulation in exterior applications and to comply with the insulation protection sections of the International Energy Conservation Code (IECC) and ASHRAE 90.1.

OTHER GREAT ARMACELL PRODUCTS AVAILABLE

[www.armacell.us](http://www.armacell.us)

# ARMACELL HAS THE SOLUTIONS

For more information about our **Healthcare Solutions Packages**, click on the package number to be linked to the package's technical data.



## HEALTHCARE SOLUTIONS PORTFOLIO PACKAGES

### HC1

#### Solution Package

### HC2

#### Solution Package

### HC3

#### Solution Package

Application	Core Performance Requirements	Superior Performance	High Performance	Standard Performance
Specification	<a href="#">Master Specification Link</a>	<a href="#">HC1 Project Specification Link</a>	<a href="#">HC2 Project Specification Link</a>	<a href="#">HC3 Project Specification Link</a>
<b>Air Plenum Piping and Duct Insulation</b>	<ul style="list-style-type: none"> <li>Class A - Flame-spread 0-25, smoke developed 50</li> <li>UL Classified to UL 723 (Listed and Labeled)</li> <li>Energy Efficient &amp; Low Total Install Costs</li> <li>Low Dust or Fiber Emitting Properties</li> <li>Mold and Mildew Resistance</li> <li>Tough &amp; Durable</li> <li>Compliant to all State and City Building Codes</li> </ul>	<ul style="list-style-type: none"> <li>ArmaFlex Ultra Pipe Insulation</li> <li>ArmaFlex Ultra Lap Seal Insulation</li> <li>ArmaFlex Ultra Sheet/Roll Insulation</li> <li>ArmaFlex Ultra Fittings</li> </ul>	<ul style="list-style-type: none"> <li>ArmaFlex Ultra Pipe Insulation</li> <li>ArmaFlex Ultra Lap Seal Insulation</li> <li>ArmaFlex Ultra Sheet/Roll Insulation</li> <li>ArmaFlex Ultra Fittings</li> </ul>	<ul style="list-style-type: none"> <li>ArmaFlex Ultra Pipe Insulation</li> <li>ArmaFlex Ultra Lap Seal Insulation</li> <li>ArmaFlex Ultra Sheet/Roll Insulation</li> <li>ArmaFlex Ultra Fittings</li> </ul>
<b>HVAC/R &amp; Mechanical Piping</b>	<ul style="list-style-type: none"> <li>Class A - Flame-spread 0-25, smoke developed 0-450</li> <li>Energy Efficient &amp; Low Total Install Costs</li> <li>Low Dust or Fiber Emitting Properties</li> <li>Mold and Mildew Resistance</li> <li>Tough &amp; Durable</li> <li>Compliant to all State and City Building Codes</li> </ul>	<ul style="list-style-type: none"> <li>ArmaFlex Ultra Pipe Insulation</li> <li>ArmaFlex Ultra Lap Seal Insulation</li> <li>ArmaFlex Ultra Sheet/Roll Insulation</li> <li>ArmaFlex Ultra Fittings</li> <li>ArmaFlex Shield Pipe Insulation</li> </ul>	<ul style="list-style-type: none"> <li>AP ArmaFlex Pipe Insulation</li> <li>AP ArmaFlex Lap Seal Insulation</li> <li>AP ArmaFlex Sheet/Roll Insulation</li> <li>AP ArmaFlex Fittings</li> </ul>	<ul style="list-style-type: none"> <li>ProFlex Pipe Insulation</li> <li>ProFlex Lap Seal Insulation</li> <li>ProFlex Sheet/Roll Insulation</li> <li>ProFlex Fittings</li> </ul>
<b>Plant Based Operations: Chilled Water and Hydronic Heating</b>	<ul style="list-style-type: none"> <li>Class A - Flame-spread 0-25, smoke developed 0-450</li> <li>Energy Efficient &amp; Low Total Install Costs</li> <li>Low Dust or Fiber Emitting Properties</li> <li>Mold and Mildew Resistance</li> <li>Tough &amp; Durable</li> <li>Compliant to all State and City Building Codes</li> </ul>	<ul style="list-style-type: none"> <li>ArmaFlex Ultra Lap Seal Insulation</li> <li>ArmaFlex Ultra Sheet/Roll Insulation</li> <li>ArmaFlex Ultra Fittings</li> </ul>	<ul style="list-style-type: none"> <li>AP ArmaFlex Pipe Insulation</li> <li>AP ArmaFlex Lap Seal Insulation</li> <li>AP ArmaFlex Sheet/Roll Insulation</li> <li>AP ArmaFlex Fittings</li> </ul>	<ul style="list-style-type: none"> <li>ProFlex Pipe Insulation</li> <li>ProFlex Lap Seal Insulation</li> <li>ProFlex Sheet/Roll Insulation</li> <li>ProFlex Fittings</li> </ul>
<b>Plumbing</b>	<ul style="list-style-type: none"> <li>Class A - Flame-spread 0-25, smoke developed 0-450</li> <li>Energy Efficient &amp; Low Total Install Costs</li> <li>Low Dust or Fiber Emitting Properties</li> <li>Mold and Mildew Resistance</li> <li>Tough &amp; Durable</li> <li>Compliant to all State and City Building Codes</li> </ul>	<ul style="list-style-type: none"> <li>Tundra Insulation (Canada)</li> <li>IMCOA SS Insulation or Tubolit SS Insulation</li> <li>PE Fittings</li> </ul>	<ul style="list-style-type: none"> <li>Tundra Insulation (Canada)</li> <li>IMCOA SS Insulation or Tubolit SS Insulation</li> <li>PE Fittings</li> </ul>	<ul style="list-style-type: none"> <li>Tundra Insulation (Canada)</li> <li>IMCOA SS Insulation or Tubolit SS Insulation</li> <li>PE Fittings</li> </ul>
<b>Accessories &amp; Supports</b>	<ul style="list-style-type: none"> <li>Class A - Flame-spread 0-25, smoke developed 0-450</li> <li>Energy Efficient &amp; Low Total Install Costs</li> <li>Low Dust or Fiber Emitting Properties</li> <li>Mold and Mildew Resistance</li> <li>Tough &amp; Durable</li> <li>Compliant to all State and City Building Codes</li> </ul>	<ul style="list-style-type: none"> <li>Insuguard Multi Saddles &amp; Shields</li> <li>ArmaFix Ecolight Pipe Supports</li> <li>Armacell Insulation Tape</li> <li>Armacell 520 Adhesives</li> </ul>	<ul style="list-style-type: none"> <li>Insuguard Multi Saddles &amp; Shields</li> <li>ArmaFix Ecolight Pipe Supports</li> <li>Armacell Insulation Tape</li> <li>Armacell 520 Adhesives</li> </ul>	<ul style="list-style-type: none"> <li>Insuguard Multi Saddles &amp; Shields</li> <li>ArmaFix Ecolight Pipe Supports</li> <li>Armacell Insulation Tape</li> <li>Armacell 520 Adhesives</li> </ul>
<b>Warranty</b>		15-Year Limited Warranty	10-Year Limited Warranty	5-Year Limited Warranty
<b>Support Documents</b>		<a href="#">HC1 Solution Package - Document Link</a>	<a href="#">HC2 Solution Package - Document Link</a>	<a href="#">HC3 Solution Package - Document Link</a>

# WARRANTIES

**15-YEAR  
LIMITED WARRANTY:**

**Superior Performance  
Package-Products**



**10-YEAR  
LIMITED WARRANTY:**

**High Performance  
Package-Products**



**5-YEAR  
LIMITED WARRANTY:**

**Standard Performance  
Package-Products**



## BASIC TERMS AND CONDITIONS FOR SOLUTION PORTFOLIO WARRANTY

- All applicable products defined within the Solution Portfolio must be installed to satisfy the system warranty for the defined package.
- This Warranty applies only to the products noted as the approved system components. Armacell will take no responsibility for any labor or other costs associated with the removal, repair, replacement or disposal of the defective Product materials.
- Product installation must be completed by an AQIP trained installer and installed in accordance with Armacell's North American Application Manual, and all other written and technical specifications of Armacell.
- Any defective Product is not discarded, destroyed or altered before inspection by Armacell, or rendered defective or damaged by modifications not made by Armacell, acts of God such as fires, explosions, hurricanes, tornados or earthquakes or by materials installed or stored near the Products.
- Owner/Contractor agrees to permit inspection of the Product installation at the Location at time of install and then at various times throughout the warranty term by Armacell and its representatives upon reasonable request during standard business hours.
- A jobsite inspection by Armacell or one of its appointed representatives will be required to validate package compliance and finalize the warranty request.
- Certificate of Warranty to be issued to the Installing Contractor for the identified project and will be effective from time of purchased.

**Full Warranty Details will be provided at time of certificate issuance**



All data and technical information are based on results achieved under typical application conditions. It is the customer's responsibility to verify if the product is suitable for the intended application. The responsibility for professional and correct installation and compliance with relevant building regulations lies with the customer. By ordering/receiving product you accept the Armacell General Terms and Conditions of Sale applicable in the region. Please request a copy if you have not received these.

© Armacell, 2020

ArmaFlex, Tubolit, Imcoa, Tundra, ArmaFix, ProFlex and Insuguard are registered trademarks of the Armacell Group.

00268 | Healthcare Solutions | Armacell | MKTbrochure | 042020 | NA | EN-A

## ABOUT ARMACELL

---

As the inventors of flexible foam for equipment insulation and a leading provider of engineered foams, Armacell develops innovative and safe thermal, acoustic and mechanical solutions that create sustainable value for its customers. Armacell's products significantly contribute to global energy efficiency making a difference around the world every day. With 3,100 employees and 24 production plants in 16 countries, the company operates two main businesses, Advanced Insulation and Engineered Foams. Armacell focuses on insulation materials for technical equipment, high-performance foams for high-tech and lightweight applications and next generation aerogel blanket technology.

For more information, please visit:  
[www.armacell.us](http://www.armacell.us)

