



# armacell<sup>®</sup>

## Insuguard<sup>®</sup>

Saddles and Shields

2018-2019 Product Catalog



Founded in 1998 by two young entrepreneurs specializing in the field of commercial and industrial refrigeration/HVAC systems, with the objective to develop products to simplify the installation of pipe runs while protecting the piping insulation, TB Concept's innovative Insuguard® products clearly stand out from competitive products. Insuguard® is the first pipe protector designed to accommodate movement of the pipes generated by thermal expansion and vibrations without ever damaging their insulation: features that no other conventional pipe saddle could offer.

Due to above unique features and their easy tool-free installation on standard strut channel with a simple click, the Insuguard® pipe protectors quickly gained market acceptance.

More recently, the successful Insuguard Multi® pipe support was launched in response to the challenge of eliminating pipe insulation damages on multiple types of hanging systems: strut, Clevis, steel angle, and even I-Beam & H-Beam! An installer can now use the same saddle, and simply swap the clipping adaptor of his choice to meet the hanging support system he is facing. What a great idea this is!

Insuguard® products are manufactured under the most stringent industry standards, tested and approved by Underwriter's Laboratories (UL/ULC).

In May of 2018 TB Concept was acquired by Armacell Canada Inc. Our R&D department will continue to meet the challenges for developing innovative, state-of-the-art, efficient new products in order to meet the industry's needs.

For more information, please contact:

#### **Armacell's Insuguard**

Phone : 1-877-979-5975 (US & Canada)

Phone : 450-979-5975

Fax : 450-979-5976

info@insuguard.com

## **TABLE OF CONTENTS**

**Company profile** .....

**Products** .....

Insuguard Multi® .....	1
Insuguard® .....	6
ShockTech® .....	10
InsuCover® .....	12
InsuClip® .....	14

**Insuguard, your solution** ..... 17





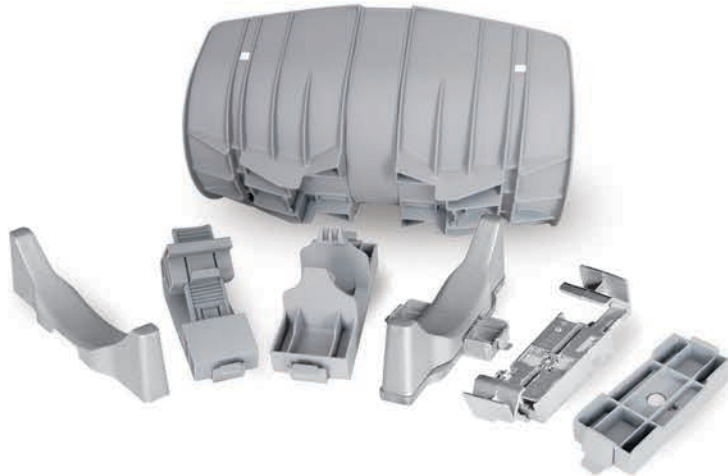
## INSUGUARD MULTI® ADAPTS TO YOUR NEEDS!

Allows use on various sizes of strut, H-Beam, floor-mount, Clevis and steel angle mountings

Benefit from the same features as the Insuguard family, with the advantage of adapting to different suspension systems, simply by swapping clipping adaptors.

### BREAKTHROUGH INNOVATION

Piping installations require different types of suspension systems, which also vary in sizes. This new design is made to adapt any chosen pipe saddle size on various sizes of struts, H-Beam, floor-mount, Clevis hangers & Steel angles. Thanks to the interchangeable bottom adaptors, Insuguard Multi® eliminates the hassle & headaches of compatibility problems you've been dealing with for so long!



### STANDARDIZE YOUR INSTALLATION

The aim of Insuguard Multi® is to make the installer's job easier while standardizing piping installations and improving appearance. Whether you are looking at new or existing installations, the Insuguard Multi® clip-on adaptors will adapt to both the suspension system and the selected size of saddle core.

✓ **ONE PART SUITS MULTIPLE USES**

Simply change adaptors to adapt

✓ **TOOL-FREE INSTALLATION**

One simple click is all it takes

✓ **FASTEST INSTALLATION IN THE INDUSTRY**

40% faster than metal or plastic shields  
80% faster than clamps and collars

✓ **MAINTAINS PIPE INSULATION PROPERTIES**

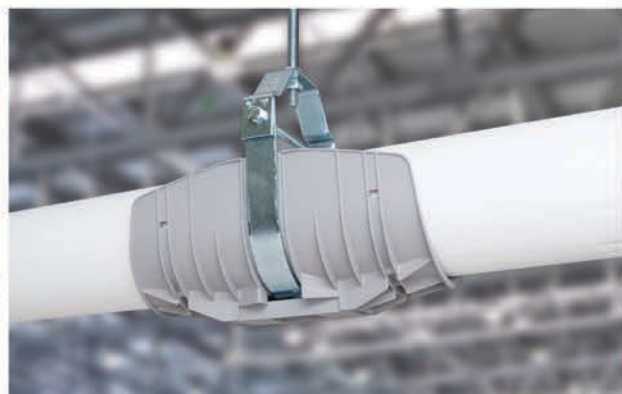
Permanent solution to displacement and/or falling of pipe support

✓ **KEEPS THERMAL BRIDGE INTACT**

Prevents insulation damage and compression

✓ **MAINTAINS LIQUID LINE IN PLACE**

Eliminates refrigerant leaks there too



# SPECIFICATION SHEET



**APPLICATIONS** Plumbing, mechanical, refrigeration, and air conditioning

**INSTALLATION** Tool-Free, Suited for horizontal pipe installation

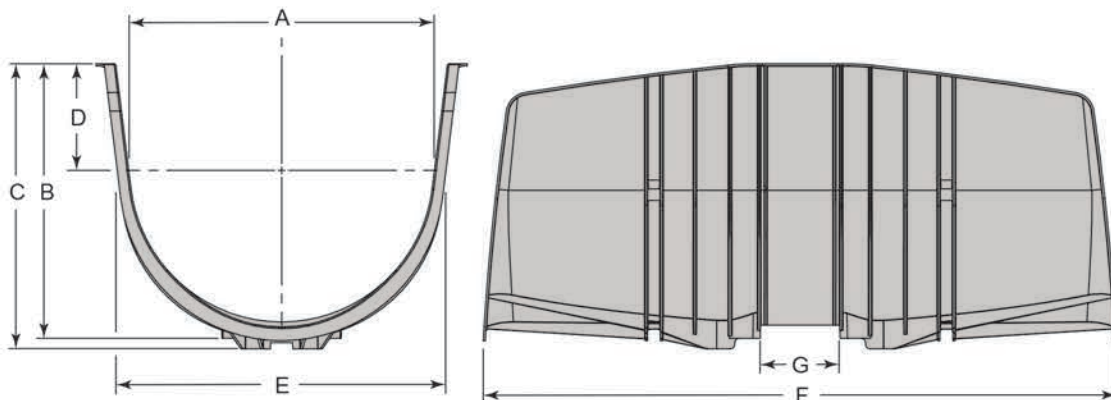
- MATERIAL**
- Polypropylene 20% glass filled
  - UV Resistant
  - Operating temperature -40° to 178°F (-40° to 81°C)
  - Paintable (preserves mechanical properties event after painting)
  - Non-adhesive surface for linear expansion of thermal insulation

**CERTIFICATION** UL classified for USA (UL-723 (ASTM E 84)) And ULC listed for Canada (ULC-S102.2).



**COLOR**  SILVER GREY (G)

PART NUMBER	A	B	C	D	E	F	G
IM250G	2.34" (60mm)	1.92" (49mm)	2.33" (59mm)	0.40" (10mm)	2.45" (62mm)	12" (305mm)	1.20" (30mm)
IM350G	3.45" (88mm)	3.17" (81mm)	3.58" (91mm)	1.09" (28mm)	3.56" (90mm)	12" (305mm)	1.48" (38mm)
IM450G	4.5" (114mm)	3.89" (99mm)	4.19" (106mm)	1.17" (30mm)	4.61" (117mm)	12" (305mm)	1.75" (44mm)
IM550G	5.56" (140mm)	4.90" (124mm)	5.20" (132mm)	1.66" (42mm)	5.75" (146mm)	12" (305mm)	1.78" (45mm)
IM650G	6.46" (165mm)	5.96" (151mm)	6.26" (159mm)	2.18" (55mm)	6.75" (171mm)	12" (305mm)	2.08" (53mm)
IM850G	8.65" (219mm)	7.83" (199mm)	8.13" (207mm)	3.04" (77mm)	8.75" (222mm)	18" (457mm)	2.26" (57mm)
IM1050G	10.65" (271mm)	7.80" (198mm)	8.10" (206mm)	1.76" (45mm)	10.59" (269mm)	23" (584mm)	2.26" (57mm)
IM1250G	12.65" (321mm)	9.18" (233mm)	9.48" (241mm)	2.14" (54mm)	12.52" (318mm)	23" (584mm)	2.26" (57mm)



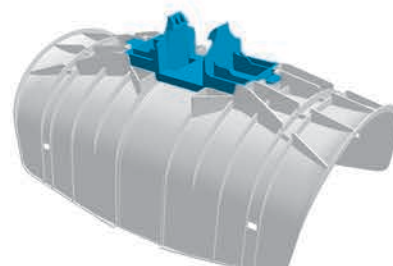
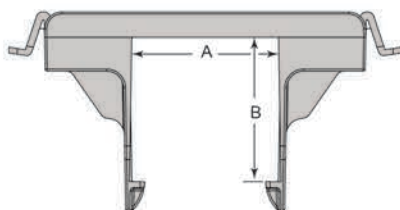




## STRUT MOUNT ADAPTOR

PART NUMBER	A	B			
IM30X30G	1 3/16" (30mm)	1 3/16" (30mm)			
IM31X43G	1 5/64" (31mm)	1 11/16" (43mm)			
IM40X38G	1 9/16" (40mm)	1 1/2" (38mm)			
IM42X20G	1 5/8" (42mm)	13/16" (20mm)			
IM42X42G	1 5/8" (42mm)	1 5/8" (42mm)			
IM42X84G	1 5/8" (42mm)	3 1/4" (84mm)			
IM42X166G	1 5/8" (42mm)	6 1/2" (166mm)			
IM4D21G	2 1/8" (54mm)	1 1/16" (27mm)			
IM4D22G	2 1/8" (54mm)	2 1/8" (54mm)			

\* Sold by the unit.

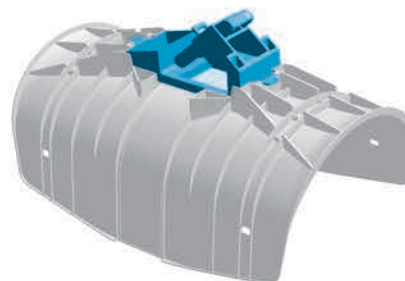
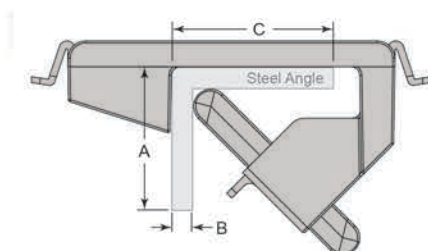


## STEEL ANGLE MOUNT ADAPTOR

PART NUMBER	A	B	C
IM2-5/8G	1" (25mm) to 2.62" (66mm)	0.125" (3mm) to 0.625" (16mm)	1" (25mm) to 2.62" (66mm)

\*Sold by the unit.

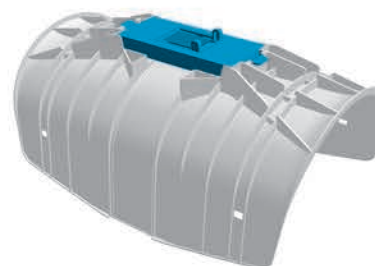
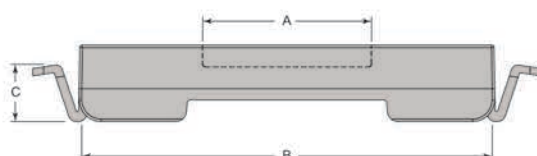
\*For steel angle : 0.125" (3mm) to 0.625" (16mm) thick and 1" (25mm) to 2.62" lip (66mm)



## CLEVIS U-STRAP MOUNT ADAPTOR

PART NUMBER	A	B	C		
IMCLEVISG	1.9" (48mm)	4.75" (120.6mm)	0.875" (22mm)		

\* Sold by the unit



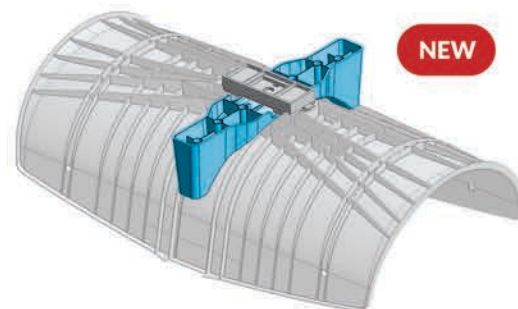
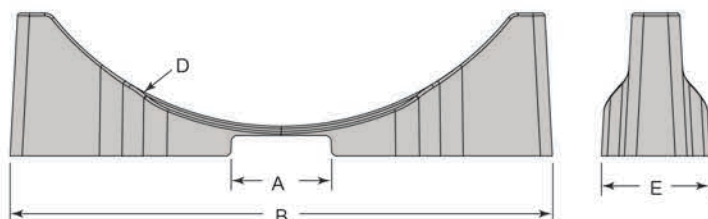
# SPECIFICATION SHEET



## STRUT STABILISATOR (FOR IM1050G AND IM1250G MODEL ONLY)

PART NUMBER	A	B	C	D	E
IMSTAB1050G	2.10" (53mm)	10.34" (263mm)	3" (76mm)	R5.13	2.24" (57mm)
IMSTAB1250G	2.10" (53mm)	11.38" (289mm)	3" (76mm)	R6.13	2.28" (58mm)

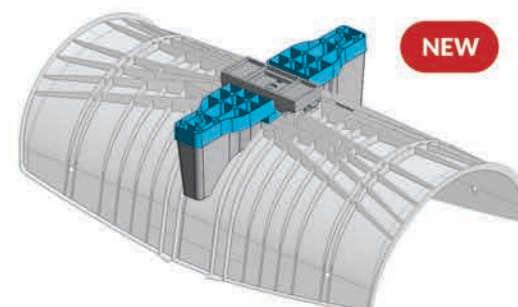
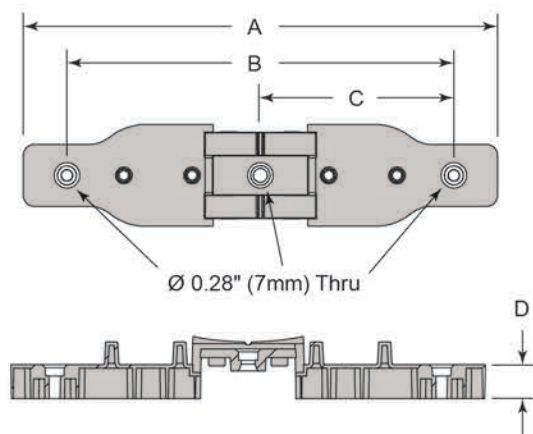
\* Sold by the unit.



## FLOOR ADAPTOR (FOR IM1050G AND IM1250G MODEL ONLY)

PART NUMBER	A	B	C	D
IMFLOOR10-12G	10.42" (265mm)	8.5" (216mm)	4.25" (108mm)	0.75" (19mm)

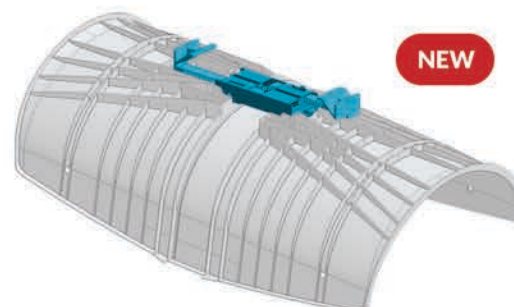
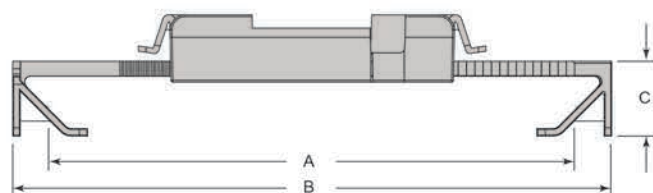
\* Sold by the unit.



## H-BEAM ADAPTOR

PART NUMBER	A	B	C
IMHBEAMG	3.5" to 8.87" (89mm to 225mm)	10.01" (254mm)	0.78" (20mm)

\* Sold by the unit.







Quickly choose the right product depending on pipe & insulation thickness.

COPPER TUBING SIZE	INSULATION THICKNESS				
	1/2" (13 mm)	3/4" (19 mm)	1" (25 mm)	1 1/2" (38 mm)	2" (50 mm)
1/4" (6.4 mm)	IM250G	IM250G	IM350G	IM350G	IM450G
3/8" (9.5 mm)	IM250G	IM250G	IM350G	IM450G	IM450G
1/2" (13 mm)	IM250G	IM250G	IM350G	IM450G	IM550G
5/8" (16 mm)	IM250G	IM250G	IM350G	IM450G	IM550G
3/4" (19 mm)	IM250G	IM350G	IM350G	IM450G	IM550G
1" (25 mm)	IM250G	IM350G	IM350G	IM450G	IM550G
1 1/4" (31 mm)	IM350G	IM350G	IM350G	IM450G	IM550G
1 1/2" (38 mm)	IM350G	IM350G	IM450G	IM550G	IM650G
2" (50 mm)	IM350G	IM450G	IM450G	IM550G	IM650G
2 1/2" (63 mm)	IM450G	IM450G	IM550G	IM650G	IM850G
3" (75 mm)	IM450G	IM550G	IM550G	IM650G	IM850G
3 1/2" (88 mm)	IM550G	IM550G	IM650G	IM850G	IM850G
4" (100 mm)	IM550G	IM650G	IM650G	IM850G	IM850G

SCH. 40/80 PIPE	INSULATION THICKNESS								
	1/2" (13 mm)	3/4" (19 mm)	1" (25 mm)	1 1/2" (38 mm)	2" (50 mm)	2 1/2" (63 mm)	3" (76 mm)	3 1/2" (89 mm)	4" (102 mm)
1/4" (6.4 mm)	IM250G	IM250G	IM350G	IM450G	IM550G	IM550G	IM650G	IM850G	IM850G
3/8" (9.5 mm)	IM250G	IM250G	IM350G	IM450G	IM550G	IM550G	IM650G	IM850G	IM850G
1/2" (13 mm)	IM250G	IM250G	IM350G	IM450G	IM550G	IM650G	IM850G	IM850G	IM1050G
3/4" (19 mm)	IM250G	IM350G	IM350G	IM450G	IM550G	IM650G	IM850G	IM850G	IM1050G
1" (25 mm)	IM250G	IM350G	IM350G	IM450G	IM550G	IM650G	IM850G	IM850G	IM1050G
1 1/4" (31 mm)	IM350G	IM350G	IM450G	IM550G	IM650G	IM850G	IM850G	IM1050G	IM1050G
1 1/2" (38 mm)	IM350G	IM350G	IM450G	IM550G	IM650G	IM850G	IM850G	IM1050G	IM1050G
2" (50 mm)	IM350G	IM450G	IM450G	IM550G	IM650G	IM850G	IM850G	IM1050G	IM1050G
2 1/2" (63 mm)	IM450G	IM450G	IM550G	IM650G	IM850G	IM850G	IM1050G	IM1050G	IM1250G
3" (75 mm)	IM450G	IM550G	IM550G	IM650G	IM850G	IM850G	IM1050G	IM1050G	IM1250G
3 1/2" (88 mm)	IM550G	IM550G	IM650G	IM850G	IM850G	IM1050G	IM1050G	IM1250G	IM1250G
4" (102 mm)	IM550G	IM650G	IM650G	IM850G	IM850G	IM1050G	IM1050G	IM1250G	IM1250G
5" (127 mm)	IM850G	IM850G	IM850G	IM1050G	IM1050G	IM1050G	IM1250G	IM1250G	-
6" (152 mm)	IM850G	IM850G	IM1050G	IM1050G	IM1250G	IM1250G	-	-	-
8" (203 mm)	IM1050G	IM1050G	IM1250G	IM1250G	-	-	-	-	-
10" (254 mm)	IM1250G	IM1250G	-	-	-	-	-	-	-

BLACK SUPPORT PART NUMBER	WHITE SUPPORT PART NUMBER	GREY SUPPORT PART NUMBER	NOMINAL INSIDE OPENING	BOX QUANTITY WEIGHT/BOX
-	-	IM250G	2.5" (64mm)	126 pcs - 14lbs (6.5kg)
-	-	IM350G	3.5" (89mm)	86 pcs - 13lbs (6kg)
-	-	IM450G	4.5" (114mm)	48 pcs - 10lbs (4.5kg)
-	-	IM550G	5.5" (140mm)	36 pcs - 9lbs (4kg)
-	-	IM650G	6.5" (165mm)	34 pcs - 10lbs (4.5kg)
-	-	IM850G	8.5" (216mm)	10 pcs - 13lbs (5.9kg)
-	-	IM1050G	10.5" (266mm)	8 pcs - 16lbs (7.2kg)
-	-	IM1250G	12.5" (317mm)	7 pcs - 16.5lbs (7.5kg)





## INSUGUARD® IS THE IDEAL PIPE SADDLE/SHIELD to protect insulated pipes

Its revolutionary design allows for pipe movement within the support, thereby eliminating common problems related to traditional pipe saddles: rotation, displacement and thermal insulation damages.

### BREAKTHROUGH PROTECTION

Insuguard® is designed to accommodate movement of the pipes generated by thermal expansion and vibration. With its unique sliding design at each end, Insuguard® easily and effectively cradles and protects pipes allowing them to expand and vibrate without damaging their insulation-ever!

Insuguard® permanently eliminates insulation tears, refrigerant leaks, condensing & freezing. It holds up to the highest quality standards of the industry.

### SETTING THE STANDARD

Made of high quality, ultra-resistant polypropylene, Insuguard® is today's most practical and economical solution to standardize pipe installations, improve appearance and completely eliminate premature insulation tears, costly leaks and loss of refrigerated merchandise caused by inadequate suspension systems.

With millions of parts sold and not a single comeback, no wonder why all major supermarket chains now specify Insuguard® on all new store installation and retrofit too.



- ✓ **FASTEST INSTALLATION IN THE INDUSTRY**  
60% faster than metal or plastic shields  
80% faster than clamps and collars
- ✓ **KEEPS THERMAL BRIDGE INTACT**  
Eliminates insulation compression
- ✓ **TOOL-FREE INSTALLATION**  
One simple click is all it takes
- ✓ **MAINTAINS PIPE INSULATION PROPERTIES**  
Eliminates displacement and/or failing of pipe support, leading to refrigerant leaks
- ✓ **MAINTAINS LIQUID LINE IN PLACE**  
Eliminates refrigerant leaks there too





# SPECIFICATION SHEET



**APPLICATIONS** Refrigeration, Air conditioning and Plumbing

**INSTALLATION** Tool-Free, "Clips" directly on standard 1-5/8" x 1-5/8" (42mm x 42mm) strut channel. Suited for horizontal pipe installation.

**MATERIAL** Polypropylene copolymer

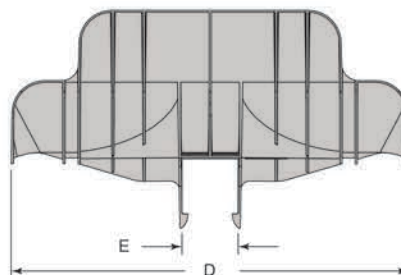
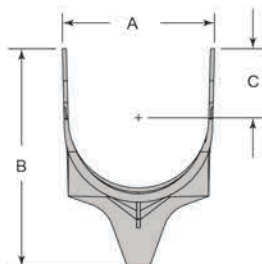
- UV resistant
- Operating temperature -40° to 178°F (-40° to 81°C)
- Paintable (preserves mechanical properties even after painting)
- Non-adhesive surface for linear expansion of thermal insulation.
- I825B & I825W have 20% glass filled material for additional strength

**CERTIFICATION** UL classified for USA (UL-723 (ASTM E 84)) And ULC listed for Canada (ULC-S102.2).



**COLORS**  BLACK (B)  WHITE (W)

PART NUMBER	A	B	C	D	E
I225B	2.25" (57mm)	4.56" (116mm)	1.09" (28mm)	12" (30.5cm)	1-5/8" (42mm)
I225W	2.25" (57mm)	4.56" (116mm)	1.09" (28mm)	12" (30.5cm)	1-5/8" (42mm)
I325B	3.25" (82mm)	5.57" (140mm)	1.59" (40mm)	12" (30.5cm)	1-5/8" (42mm)
I325W	3.25" (82mm)	5.57" (140mm)	1.59" (40mm)	12" (30.5cm)	1-5/8" (42mm)
I425B	4.25" (108mm)	6.59" (167mm)	2.09" (53mm)	12" (30.5cm)	1-5/8" (42mm)
I425W	4.25" (108mm)	6.59" (167mm)	2.09" (53mm)	12" (30.5cm)	1-5/8" (42mm)
I525B	5.25" (133mm)	7.57" (192mm)	2.58" (66mm)	12" (30.5cm)	1-5/8" (42mm)
I525W	5.25" (133mm)	7.57" (192mm)	2.58" (66mm)	12" (30.5cm)	1-5/8" (42mm)
I625B	6.25" (159mm)	8.57" (218mm)	3.09" (78mm)	12" (30.5cm)	1-5/8" (42mm)
I625W	6.25" (159mm)	8.57" (218mm)	3.09" (78mm)	12" (30.5cm)	1-5/8" (42mm)
I825B	8.25" (204mm)	11.04" (280mm)	4.27" (108mm)	12" (30.5cm)	1-5/8" (42mm)
I825W	8.25" (204mm)	11.04" (280mm)	4.27" (108mm)	12" (30.5cm)	1-5/8" (42mm)





Quickly choose the right product depending on pipe & insulation thickness.

COPPER TUBING SIZE	INSULATION THICKNESS				
	1/2" (13 mm)	3/4" (19 mm)	1" (25 mm)	1 1/2" (38 mm)	2" (50 mm)
1/4" (6.4 mm)	I225	I225	I325	I425	I525
3/8" (9.5 mm)	I225	I225	I325	I425	I525
1/2" (13 mm)	I225	I225	I325	I425	I525
5/8" (16 mm)	I225	I325	I325	I425	I525
3/4" (19 mm)	I225	I325	I325	I425	I525
7/8" (22 mm)	I225	I325	I325	I425	I525
1 1/8" (28.5 mm)	I325	I325	I425	I525	I625
1 3/8" (35 mm)	I325	I325	I425	I525	I625
1 5/8" (41 mm)	I325	I425	I425	I525	I625
2 1/8" (54 mm)	I425	I425	I525	I625	I825
2 5/8" (67 mm)	I425	I525	I525	I625	I825
4 1/8" (105 mm)	I525	I525	I625	I825	I825
5 1/8" (130 mm)	I525	I825	I825	I825	-

SCH. 40/80 PIPE	INSULATION THICKNESS				
	1/2" (13 mm)	3/4" (19 mm)	1" (25 mm)	1 1/2" (38 mm)	2" (50 mm)
1/4" (6.4 mm)	I225	I225	I325	I425	I525
3/8" (9.5 mm)	I225	I225	I325	I425	I525
1/2" (13 mm)	I225	I325	I325	I425	I525
3/4" (16 mm)	I225	I325	I325	I425	I525
1" (25 mm)	I325	I325	I425	I525	I625
1 1/4" (31 mm)	I325	I325	I425	I525	I625
1 1/2" (38 mm)	I325	I425	I425	I525	I625
2" (50 mm)	I425	I425	I425	I525	I625
2 1/2" (63 mm)	I425	I525	I525	I625	I825
3" (75 mm)	I525	I525	I625	I825	I825
3 1/2" (88 mm)	I525	I625	I625	I825	I825
4" (100 mm)	I625	I625	I825	I825	I825
5" (127 mm)	I825	I825	I825	-	-
6" (152 mm)	I825	I825	-	-	-

BLACK SUPPORT PART NUMBER	WHITE SUPPORT PART NUMBER	NOMINAL INSIDE OPENING	BOX QUANTITY WEIGHT/BOX
I225B	I225W	2.25" (57mm)	65 pcs - 17lbs (7.7kg)
I325B	I325W	3.25" (82mm)	38 pcs - 14lbs (6.4kg)
I425B	I425W	4.25" (108mm)	25 pcs - 13lbs (5.9kg)
I525B	I525W	5.25" (133mm)	16 pcs - 11lbs (5.0kg)
I625B	I625W	6.25" (159mm)	12 pcs - 10lbs (4.5kg)
I825B	I825W	8.25" (204mm)	4 pcs - 7lbs (2.1kg)





THERMAL EXPANSION OF COPPER PIPING

SYSTEM APPLICATION	TEMPERATURE VARIATION OF THE PIPING	THERMAL EXPANSION OF PIPING FOR 100 FEET (30 M)	THERMAL EXPANSION OF PIPING FOR 200 FEET (61 M)	THERMAL EXPANSION OF PIPING FOR 300 FEET (91 M)
LOW TEMPERATURE	70° F TO -40° F (21° C TO -40° C)	1 3/8 INCHES (34 MM)	2 3/4 INCHES (69 MM)	4 1/8 INCHES (103 MM)
MEDIUM TEMPERATURE	70° F TO 0° F (21° C TO -18° C)	7/8 INCHES (22 MM)	1 3/4 INCHES (44 MM)	2 5/8 INCHES (66 MM)
COOL GAS DEFROST SYSTEM	130° F TO -40° F (53° C TO -40° C)	2 1/8 INCHES (53 MM)	4 1/4 INCHES (106 MM)	6 3/8 INCHES (160 MM)

ORIGINS OF REFRIGERANT LEAKS



13% of leaks may not seem significant compared to other areas but in fact, they are the most expensive leaks. Here's why; The difficulties in reaching them and finding where they are.

- piping in the back of refrigerated case
- inside ceiling
- floor tunnel

Therefore, a technician may find a minor leak on a valve, fix it, refill the system with gas thinking the leak came from that point. This is normal, all systems leak. Days later, another service call, same story. Until someone decides to look at hard to reach places. How much gas were put back in there? How many times? How expensive is that?

**Leak tests are done everywhere else before looking at piping areas because of difficulties to reach those leaks.**

## SHOCK DETECTOR

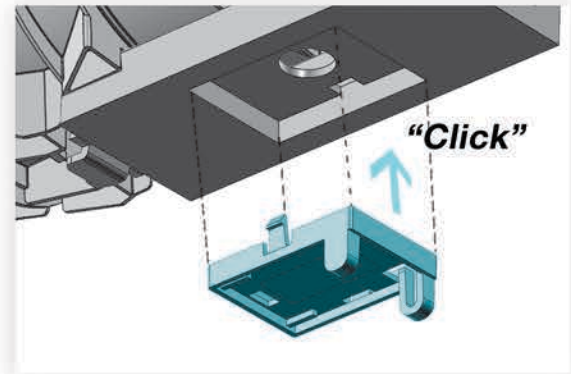
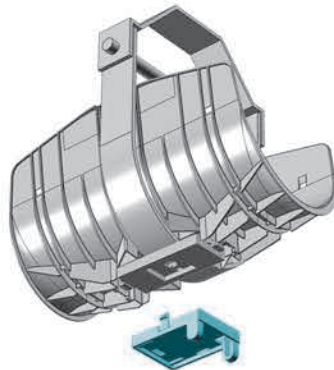


Water hammer problems create extensive piping damages in various industries. The magnetic shock detection device is a great tool to help maintenance crew detecting water hammer areas BEFORE pipe damage occurs.



### TOOL-FREE "CLIP-ON"

Nicely designed, the Tool-free "Clip-On" magnetic shock detector easily fits into bottom clevis adaptor of the Insuguard Multi® pipe saddles.



### INTERCHANGEABLE COLOR-CODED FLAGS

The magnetised shock detection system is supplied with interchangeable color-coded swinging flags.

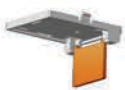


Each flag will trigger at a different shock intensity. Flags are easily interchangeable for different shock tolerance. Various flags thickness for different shock intensity.

- 1.8G (Downward Allowable Stress Design)
- 1.6G (Downward Allowable Stress Design)
- 1.4G (Downward Allowable Stress Design)







**APPLICATIONS** Refrigeration, Air conditioning and plumbing

**INSTALLATION** Tool-Free, clips directly into the Clevis adaptor of the Insuguard Multi®

- MATERIAL**
- Polypropylene 20% glass filled
  - UV Resistant
  - Operating temperature -40° to 178°F (-40° to 81°C)

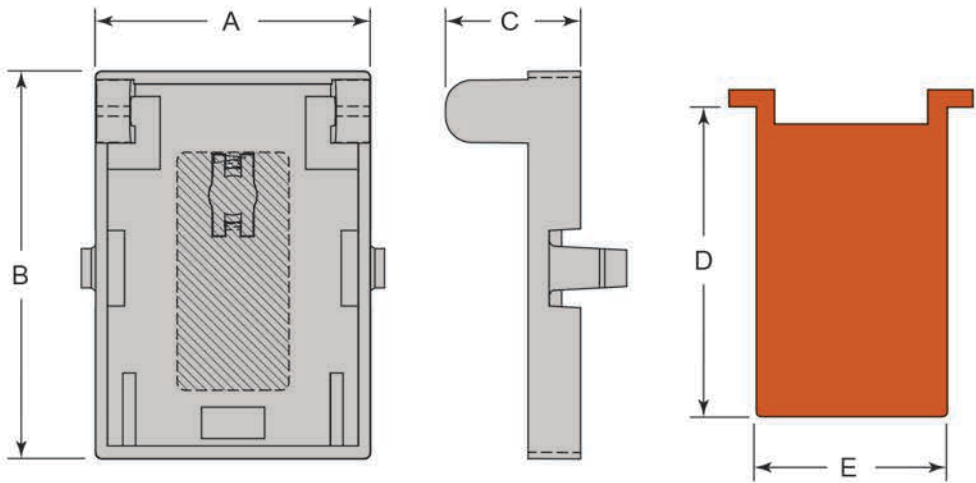
**CERTIFICATION** UL classified for USA (UL-723 (ASTM E 84)) And ULC listed for Canada (ULC-S102.2).



**COLOR**  SILVER GREY (G)

PART NUMBER	A	B	C	D	E	
ShockTechG	1.31" (33mm)	1.85" (47mm)	0.64" (16mm)	1.45" (36.8mm)	0.9" (22.8mm)	

\* ShockTech® is sold by the unit. Each unit is supplied complete with all three flags.





## INSUCOVER® FOR EXTRA PROTECTION! will fit on any of our pipe saddles

Some applications require that insulated pipes be attached to their support.  
The InsuCover® is the perfect accessory to complete this task.

### BREAKTHROUGH INNOVATION

Its flexible design allows it to automatically adjust to the pipe's curve. Simply put on top of the pipe, it can be quickly attached with tie-wraps since both the saddle and the InsuCover® have matching notches for easy tool free installation. Similar to the Insuguard®, its sliding lip design at both ends allows the pipes to move freely without damaging the insulation.



### TOOL FREE AND CONVENIENT

Keeping in mind convenience of use and fast installation, the InsuCover® was designed as a single part that will suit all sizes of saddles. A quick knife cut will make the right size of cover needed as shown below.



- ✓ **ONE PART SUITS ALL SIZES**  
Simply cut to desired size
- ✓ **ALLOWS THE PIPE TO MOVE**  
Sliding lip design at both ends
- ✓ **FAST INSTALLATION**  
Simply cut to desired size & tie-rap at both ends







**APPLICATIONS** Refrigeration, Air conditioning and plumbing

**INSTALLATION** Tool-Free, Suited for horizontal pipe installation

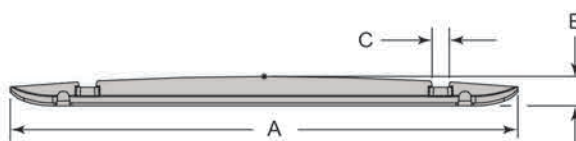
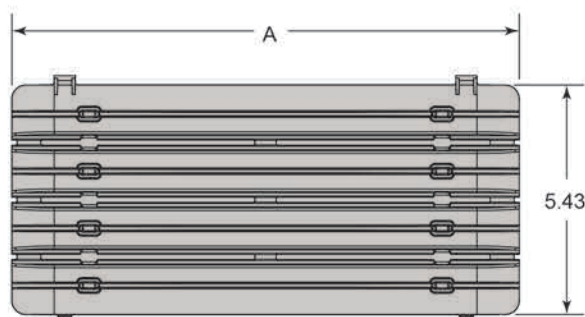
- MATERIAL**
- Polypropylene
  - UV Resistant
  - Operating temperature -40° to 178°F (-40° to 81°C)
  - Paintable (preserves mechanical properties event after painting)
  - Non-adhesive surface for linear expansion of thermal insulation

**CERTIFICATION** UL classified for USA (UL-723 (ASTM E 84)) And ULC listed for Canada (ULC-S102.2).



**COLOR**  SILVER GREY (G)  BLACK (B)  WHITE (W)

PART NUMBER	DESCRIPTION	A	B	C
UCX25B	12" Black InsuCover for I225B, I325B, I425B, I525B, I625B	12.02" (305mm)	0.83" (21mm)	0.41" (10mm)
UCX25W	12" White InsuCover for I225W, I325W, I425W, I525W, I625W	12.02" (305mm)	0.83" (21mm)	0.41" (10mm)
UCX50G	12" Grey InsuCover for IM250G, IM350G, IM450G, IM550G, IM650G	12.02" (305mm)	0.83" (21mm)	0.41" (10mm)
UC825B	12" Black InsuCover for I825B	12.02" (305mm)	0.83" (21mm)	0.41" (10mm)
UC825W	12" White InsuCover for I825W	12.02" (305mm)	0.83" (21mm)	0.41" (10mm)
UCL50G	18" Grey InsuCover for IM850G, IM1050G, IM1250G	18.02" (457mm)	0.77" (19.5mm)	0.41" (10mm)





## INNOVATIVE PIPE FASTENER TAKES ADVANTAGE OF UNUSED SPACE at the top of standard Clevis Hangers !

Need to run an extra line using existing Clevis hangers ? The InsuClip<sup>®</sup> was designed to fill that need ! With this new inexpensive pipe fastener, you can now securely fasten liquid lines (refrigeration), water pipes, electrical cables, communications cables, etc. within the free space available above the cross-bolt of Clevis Hangers.



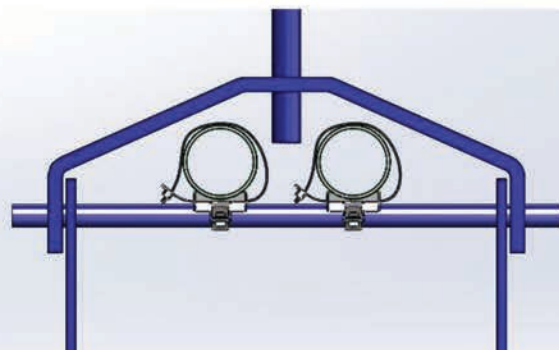
### TOOL-FREE INSTALLATION

The dual-strap fastener is first fixed to the pipe and then easily slid inside the Clevis Hanger upper space where it is attached to the cross-bolt. Both plastic straps are easily tightened and securely locked into place, just like you would do with a tie-wrap. The InsuClip<sup>®</sup> fastener will not interfere with the swinging movement of the lower U-shaped metal strap as it is only attached to the cross-bolt.

### GREATLY CONTRIBUTES TO LOWER YOUR INSTALLATION COSTS

No need to install separate pipe hangers as you benefit from the free space provided by the upper area of the existing sturdy Clevis Hanger ceiling installation which can accommodate holding additional pipes or cables up to 2.25 inch (57 mm) in diameter. This clever, inexpensive fastener will save you time and money whenever your customers need to add an extra pipe run or some cabling to an existing installation.

- ✓ **TIME-SAVING TIE-WRAP STYLE FASTENING**  
Dual straps already molded within the fastener assembly, saving installation time
- ✓ **TOOL-FREE INSTALLATION**  
Nuts & bolts not required. Self-locking straps securely holds the pipe to the Clevis hangers
- ✓ **VERSATILE LOW-COST SOLUTION TO HOLD PIPES OR CABLES**  
The fastener only costs a fraction of conventional installations and allows adding various types of pipes or cables to an existing Clevis Hangers installation.
- ✓ **TAKES NO ADDITIONAL CEILING SPACE**  
Small fastener allows running pipes and cables through existing Clevis hangers unused space
- ✓ **ROUNDED SHAPE OF FASTENER BASE WILL ACCOMMODATE VARIOUS SIZES OF PIPES OR CABLES**  
The indented rounded base will securely hold pipes or cables sizes ranging from 0.25 to 2.25 inches (6.35 to 25 mm)







**APPLICATIONS** Refrigeration, Air conditioning, plumbing, electrical and communication

**INSTALLATION** Tool-Free, Tie-wrap style

- MATERIAL**
- Polypropylene
  - UV Resistant
  - Operating temperature -40° to 178°F (-40° to 81°C)
  - Paintable (preserves mechanical properties event after painting)

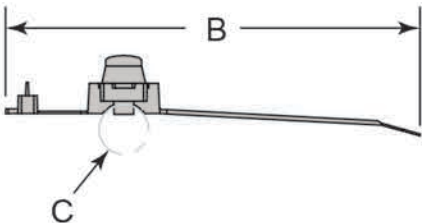
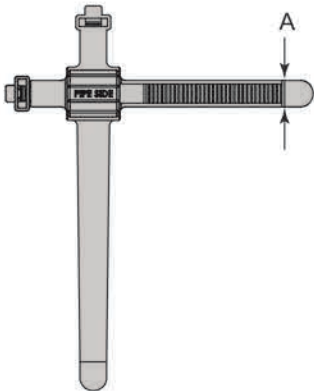
**CERTIFICATION** UL classified for USA (UL-723 (ASTM E 84)) And ULC listed for Canada (ULC-S102.2).

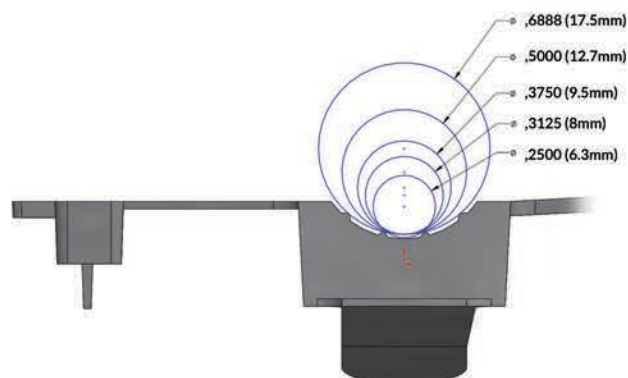
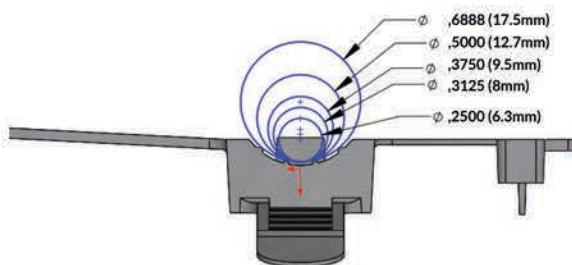


**COLOR**  SILVER GREY (G)

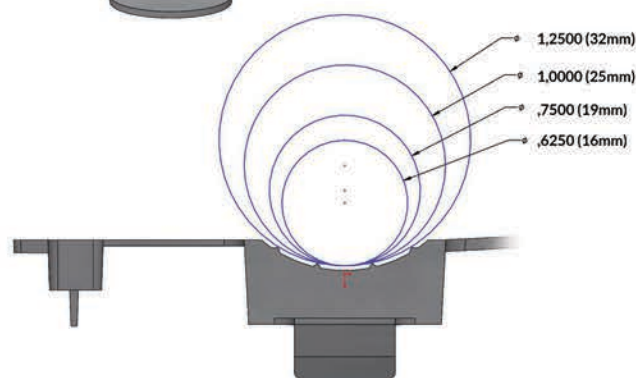
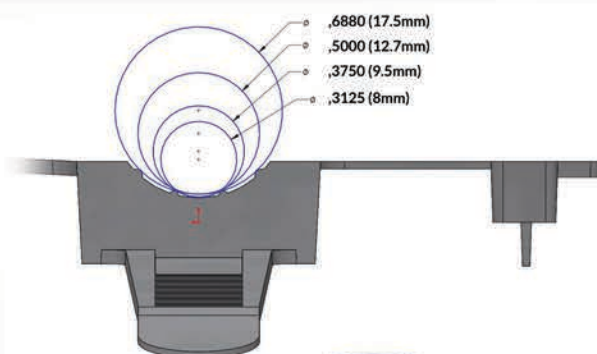
		Pipe diameter								
		0.25" (6.3mm)	0.5" (12.7mm)	0.625" (15.9mm)	0.75" (19mm)	1" (25.4mm)	1.25" (31.8mm)	1.5" (38.1mm)	1.75" (44.5mm)	2" (50.8mm)
Bolt diameter	0.25" (6.3mm)	IMP050G	IMP050G	-	-	-	-	-	-	-
	0.3125" (7.9mm)	IMP050G	IMP050G	IMP125G	IMP125G	IMP125G	IMP125G	-	-	-
	0.375" (9.5mm)	IMP050G	IMP050G	IMP125G	IMP125G	IMP125G	IMP125G	IMP175G	-	-
	0.5" (12.7mm)	IMP050G	IMP050G	IMP125G	IMP125G	IMP125G	IMP125G	IMP175G	IMP225G	IMP225G
	0.688" (17.5mm)	IMP050G	IMP050G	IMP125G	IMP125G	IMP125G	IMP125G	IMP175G	IMP225G	IMP225G

PART NUMBER	A	B	C
IMP050G	0.5" (12.7mm)	5.62" (143mm)	0.68" (17mm)
IMP125G	0.5" (12.7mm)	5.77" (146.5mm)	1.25" (32mm)
IMP175G	0.5" (12.7mm)	6.20" (157.5mm)	1.75" (44.5mm)
IMP225G	0.5" (12.7mm)	6.20" (157.5mm)	1.71" (43.5mm)

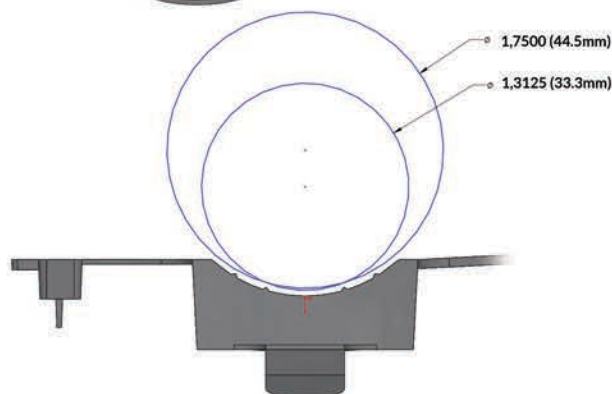
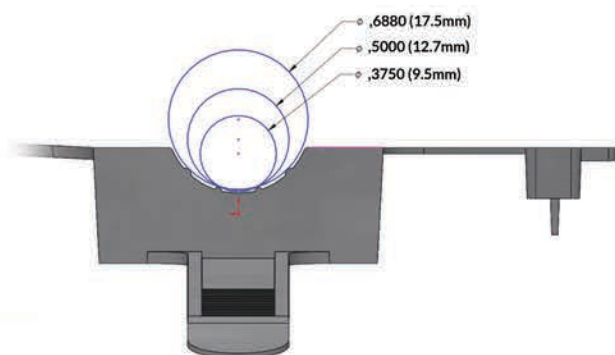




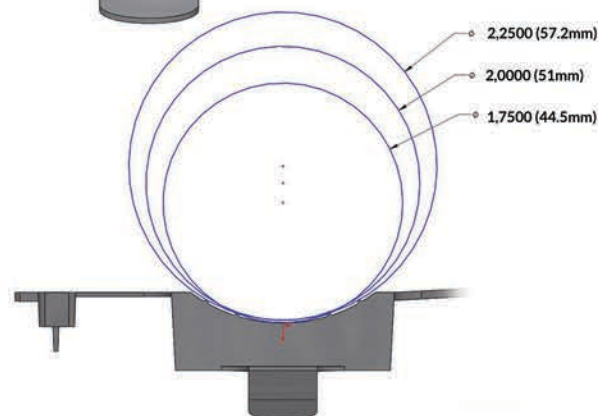
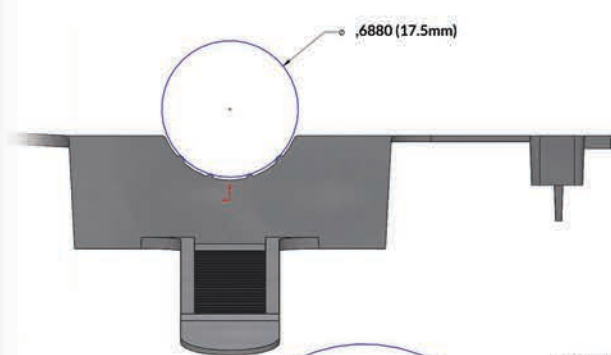
PART NUMBER	PIPE DIAMETER	BOLT DIAMETER
IMP050G	0.25" - 0.688" (6.3mm to 17.5mm)	0.25" - 0.688" (6.3mm to 17.5mm)



PART NUMBER	PIPE DIAMETER	BOLT DIAMETER
IMP125G	0.625" - 1.25" (16mm to 32mm)	0.3125" - 0.688" (8mm to 17.5mm)



PART NUMBER	PIPE DIAMETER	BOLT DIAMETER
IMP175G	1.3125" - 1.75" (33.3mm to 44.5mm)	0.375" - 0.688" (9.5mm to 17.5mm)



PART NUMBER	PIPE DIAMETER	BOLT DIAMETER
IMP225G	1.75" - 2.25" (44.5mm to 57.2mm)	0.688" (17.5mm)





✗ PROBLEM



✓ SOLUTION



CONDENSING  
MOULD

✗ PROBLEM

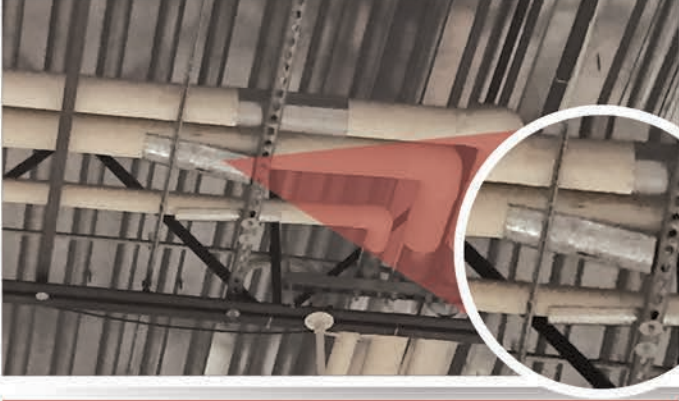


✓ SOLUTION



INSULATION  
TEAR-OFF

✗ PROBLEM

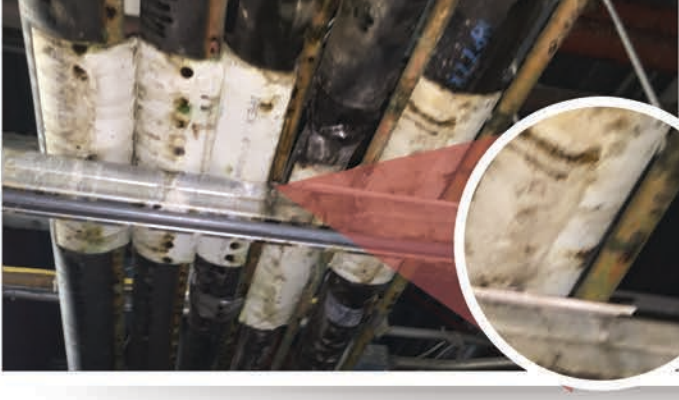


✓ SOLUTION

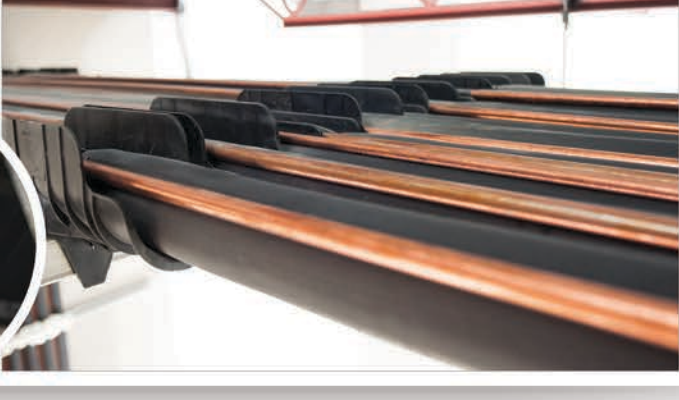


FALLING  
SADDLES

✗ PROBLEM



✓ SOLUTION



REFRIGERANT  
LEAKS



SEE OUR QUICK-INSTALL  
"CLIP-ON" VIDEO



[insuguard.com/youtube](https://insuguard.com/youtube)